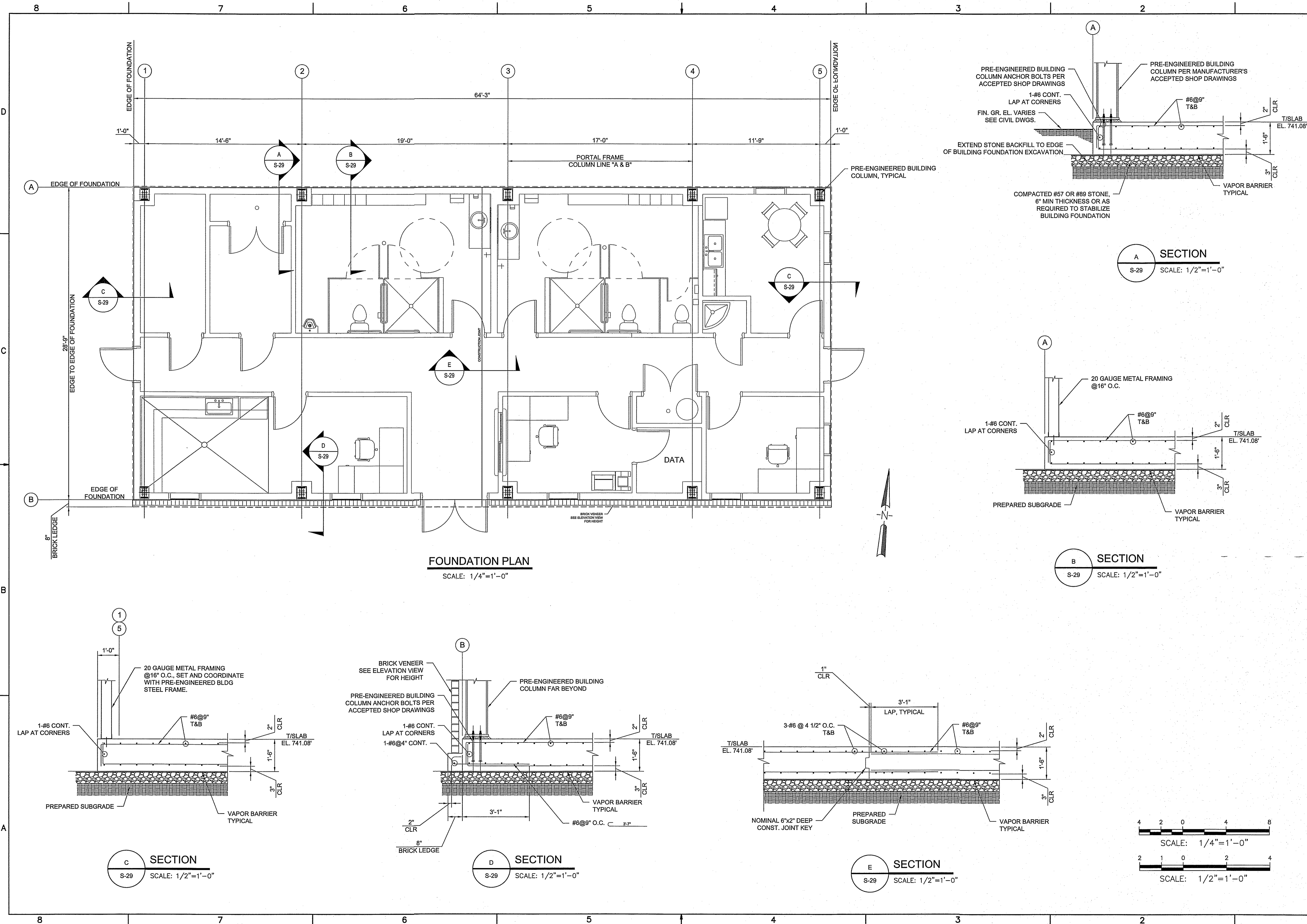


J:\Rockdale County GA\01 DESIGN\01.02 DRAWINGS\04 STRUCTURAL\S-29 ADMINISTRATION BUILDING.dwg



FOUNDATION PLAN
SCALE: 1/4"=1'-0"

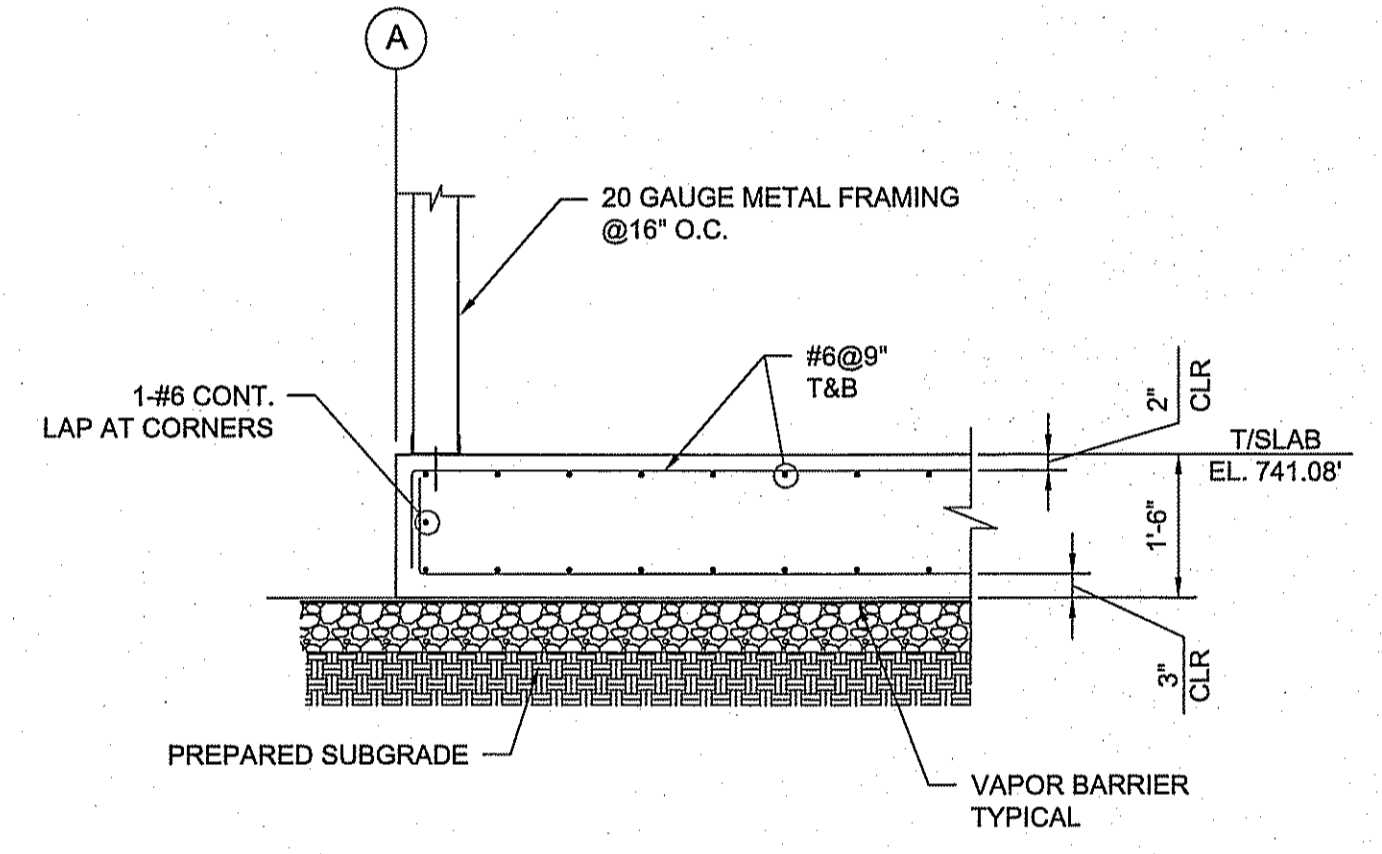
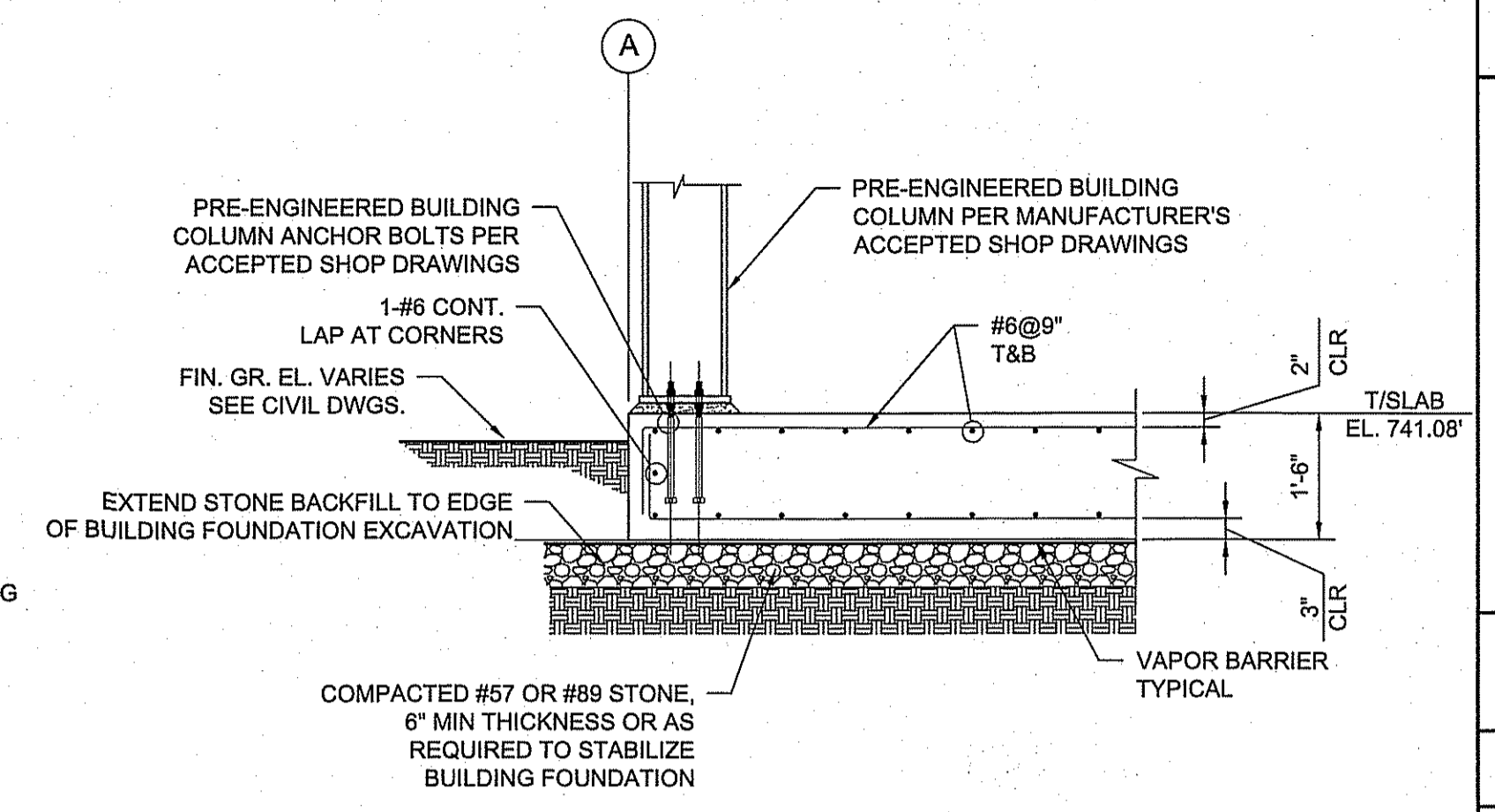
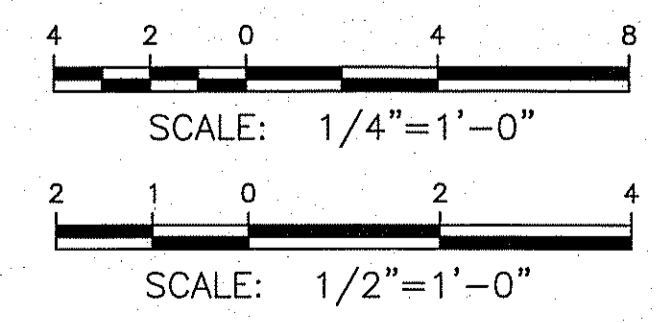
A SECTION
S-29 SCALE: 1/2"=1'-0"

B SECTION
S-29 SCALE: 1/2"=1'-0"

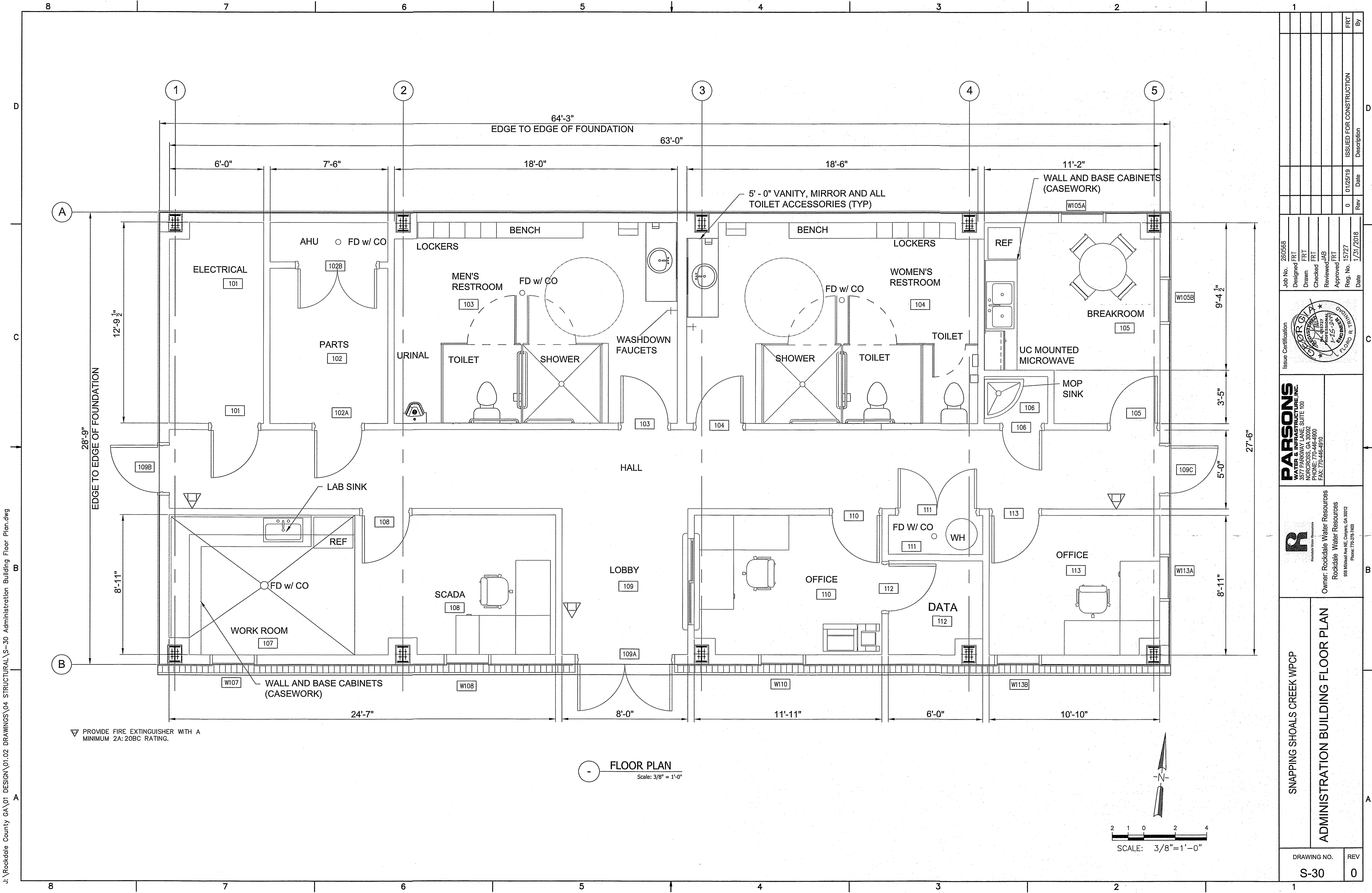
C SECTION
S-29 SCALE: 1/2"=1'-0"

D SECTION
S-29 SCALE: 1/2"=1'-0"

E SECTION
S-29 SCALE: 1/2"=1'-0"



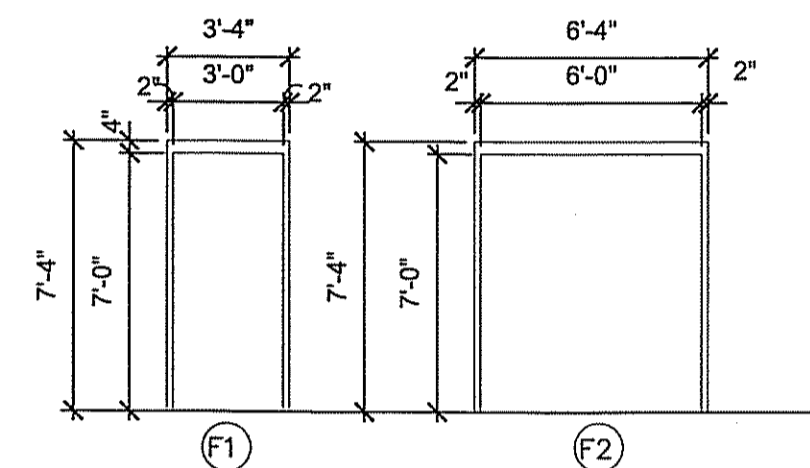
Job No. 260568		Designed FRT		Drawn FRT		Checked JAB		Reviewed JAB		Approved FRT		Reg. No. 15727		Date 1/31/2018			
Issue Certification		Professional Engineer		Professional Engineer		Professional Engineer		Professional Engineer		Professional Engineer		Professional Engineer		Professional Engineer			
PARSONS WATER & INFRASTRUCTURE INC. 387 PARKWAY LAKE SUITE 100 ROCKDALE, GA 30152 PHONE: 770-468-4800 FAX: 770-468-4870		Owner: Rockdale Water Resources Rockdale Water Resources 828 Millwood Ave NE, Conley, GA 30124 Phone: 770-276-7600		SNAPPING SHOALS CREEK WPCP ADMINISTRATION BUILDING FOUNDATION PLAN		DRAWING NO. S-29		REV 0		ISSUED FOR CONSTRUCTION		Date 01/25/18		Rev 0		Description	



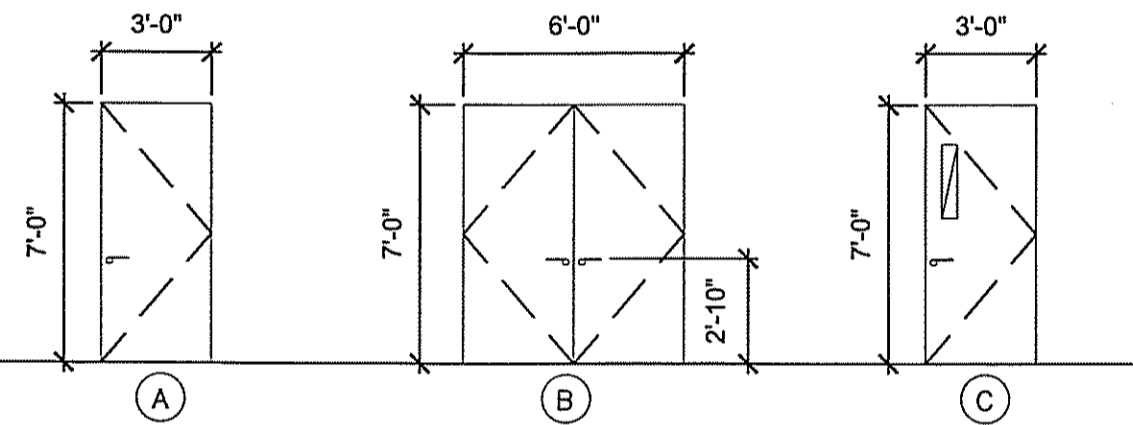
DOOR AND FRAME SCHEDULE

MARK	DOOR			FRAME		FIRE RATING LABEL	NOTES		
	WD	HGT	THK	MATL	TYPE				
101	3'-0"	7'-0"	1 3/4"	HM	A	METAL	F1	--	SINGLE
102A	3'-0"	7'-0"	1 3/4"	SC WOOD	C	METAL	F1	--	SINGLE
102B	6'-0"	7'-0"	1 3/4"	SC WOOD	C	METAL	F2	--	DOUBLE - VENTED
103	3'-0"	7'-0"	1 3/4"	SC WOOD	A	METAL	F1	--	SINGLE
104	3'-0"	7'-0"	1 3/4"	SC WOOD	A	METAL	F1	--	SINGLE
105	3'-0"	7'-0"	1 3/4"	SC WOOD	C	METAL	F1	--	SINGLE
106	2'-6"	7'-0"	1 3/4"	SC WOOD	A	METAL	F1	--	SINGLE
108	3'-0"	7'-0"	1 3/4"	SC WOOD	C	METAL	F1	--	SINGLE
109A	6'-0"	7'-0"	1 3/4"	ALUM.	A	ALUM.	F2	--	DOUBLE - ALUMINUM STOREFRONT W/ TRANSOM FRAME
109B	3'-0"	7'-0"	1 3/4"	HM	C	METAL	F1	--	SINGLE
109C	3'-0"	7'-0"	1 3/4"	HM	C	METAL	F1	--	SINGLE
110	3'-0"	7'-0"	1 3/4"	SC WOOD	C	METAL	F1	--	SINGLE
111	6'-0"	7'-0"	1 3/4"	SC WOOD	C	METAL	F2	--	DOUBLE - VENTED
112	3'-0"	7'-0"	1 3/4"	SC WOOD	C	METAL	F1	--	SINGLE
113	3'-0"	7'-0"	1 3/4"	SC WOOD	C	METAL	F1	--	SINGLE

HM = HOLLOW METAL
SC WOOD = SOLID CORE WOOD, CLEAR FINISH



DOOR FRAME TYPES
SCALE: 1/4" = 1'-0"



DOOR TYPES
SCALE: 1/4" = 1'-0"

NOTES:

- DOORS AND FRAMES SHALL BE AS MANUFACTURED BY REPUBLIC AS PREMIUM INSULATED HOLLOW METAL DOOR, MORTISE LOCK, EDGE PREP, 90 MINUTE FIRE RATED WITH 5'X20" WINDOW OR EQUAL.
- WOOD DOORS SHALL BE AS MANUFACTURED BY DOORMERICA AS COMMERCIAL SOLID BRICH DOOR W/CYLINDRICAL LOCK PREP, CLEAR FINISH, OR EQUAL.

WINDOW SCHEDULE

MARK	SIZE		MATERIAL	NOTES
	WIDTH	HEIGHT		
ALL EXTERIOR	3'-0"	5'-0"	FIXED ALUMINUM	--
SLIDING GLASS RECEPTION	5'-6"	4'-0"	ALUMINUM FRAME AND TRACK	--

ROOM FINISH SCHEDULE

ROOM NAME	ROOM NUMBER	FLOOR	BASE	WALLS			CEILING		NOTES
				N	S	E	W	MATL	
ELECTRICAL ROOM	101	CONCRETE	RUBBER	PNT	PNT	PNT	PNT	A.C.T.#1	VARIES
PARTS ROOM / AHU	102	CONCRETE	RUBBER	PNT	PNT	PNT	PNT	A.C.T./ GYP BRD	VARIES
MEN'S RESTROOM	103	TILE	TILE	PNT	PNT	PNT	PNT	A.C.T.#2	9'-0"
WOMEN'S RESTROOM	104	TILE	TILE	PNT	PNT	PNT	PNT	A.C.T.#2	9'-0"
BREAKROOM	105	RES. TILE	RUBBER	PNT	PNT	PNT	PNT	A.C.T.#1	9'-0"
MOP SINK	106	RES. TILE	RUBBER	PNT	PNT	PNT	PNT	GYP BOARD	9'-0"
WORK ROOM	107	RES. TILE	RUBBER	PNT	PNT	PNT	PNT	A.C.T.#2	9'-0"
SCADA	108	RES. TILE	RUBBER	PNT	PNT	PNT	PNT	A.C.T.#1	9'-0"
LOBBY AND HALL	109	RES. TILE	RUBBER	PNT	PNT	PNT	PNT	A.C.T.#1	9'-0"
OFFICE	110	RES. TILE	RUBBER	PNT	PNT	PNT	PNT	A.C.T.#1	9'-0"
WH CLOSET	111	RES. TILE	RUBBER	PNT	PNT	PNT	PNT	GYP BOARD	9'-0"
DATA ROOM	112	RES. TILE	RUBBER	PNT	PNT	PNT	PNT	GYP BOARD	9'-0"
OFFICE	113	RES. TILE	RUBBER	PNT	PNT	PNT	PNT	A.C.T.#1	9'-0"

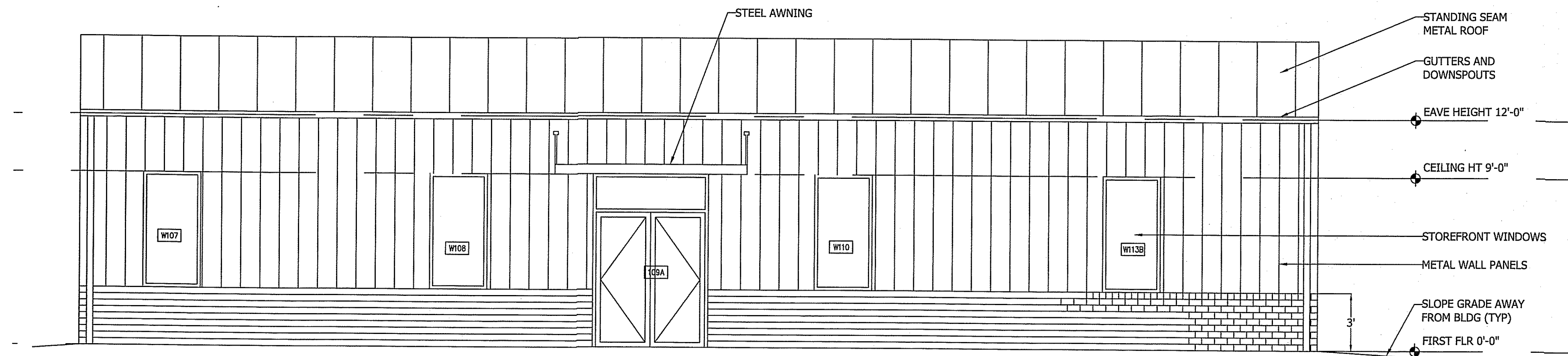
A.C.T. = ACOUSTICAL CEILING TILE
PNT = PAINT

NOTES:

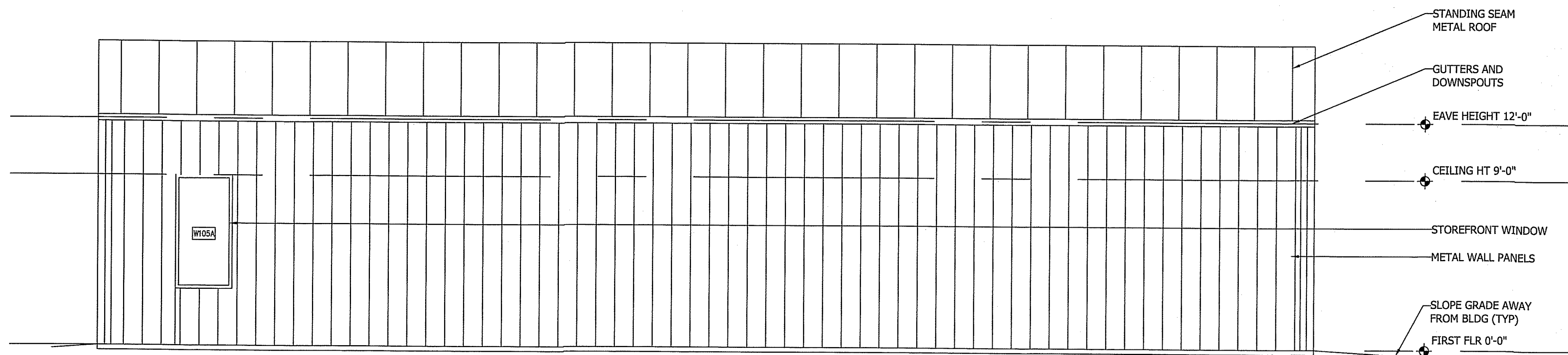
- TOILET ACCESSORIES TO INCLUDE:
 - * SURFACE MOUNTED TISSUE DISPENSER
 - * SURFACE MOUNTED PAPER TOWEL DISPENSER
 - * LIQUID SOAP DISPENSER - SURFACE MOUNTED
 - * 42" SIDE WALL GRAB BAR
 - * 36" REAR WALL GRAB BAR
 - * SANITARY NAPKIN DISPOSAL UNIT - SURFACE MOUNTED
- CERAMIC TILE FOR WALLS SHALL BE 4"X4" GLAZED, PREFABRICATED BACK MOUNTED, WITH CORNER BEADS, BULLNOSE AND CURB. FLOOR CERAMIC TILES SHALL BE UNGLAZED, SLIP RESISTANT 12"X12" WITH COVE AND COVE BASE.
- SHOWERS AREA TO BE TILED.

Job No. 260566	Designed FRT	Drawn FRT	Checked FRT	Reviewed JAB	Approved FRT	Reg. No. 15727	Date 1/24/2019
PARSONS WATER & WASTE WATER TREATMENT, INC. 3877 PARKWAY LANE, SUITE 100 NORCROSS, GA 30092 PHONE: 770-468-6800 FAX: 770-468-6510							
Owner: Rockdale Water Resources Rockdale Water Resources 858 Millbrook Ave NE, Conley, GA 30132 Phone: 770-576-7400							
SNAPPING SHOALS CREEK WPCP ADMINISTRATION BUILDING DOOR, WINDOW AND FINISH SCHEDULE							
DRAWING NO.						REV	
S-31						0	

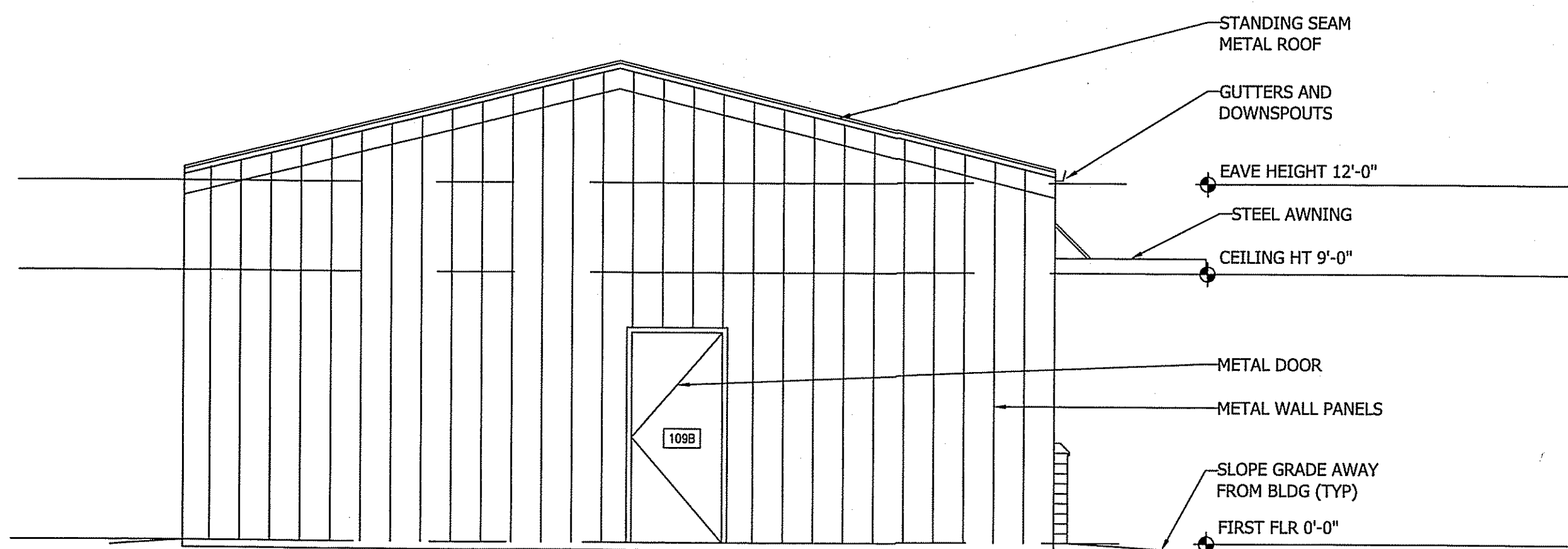
J:\Rockdale County GA\01 DESIGN\01.02 DRAWINGS\04 STRUCTURAL\04 STRUCTURAL\04 ADMINISTRATION BUILDING ELEVATIONS.dwg



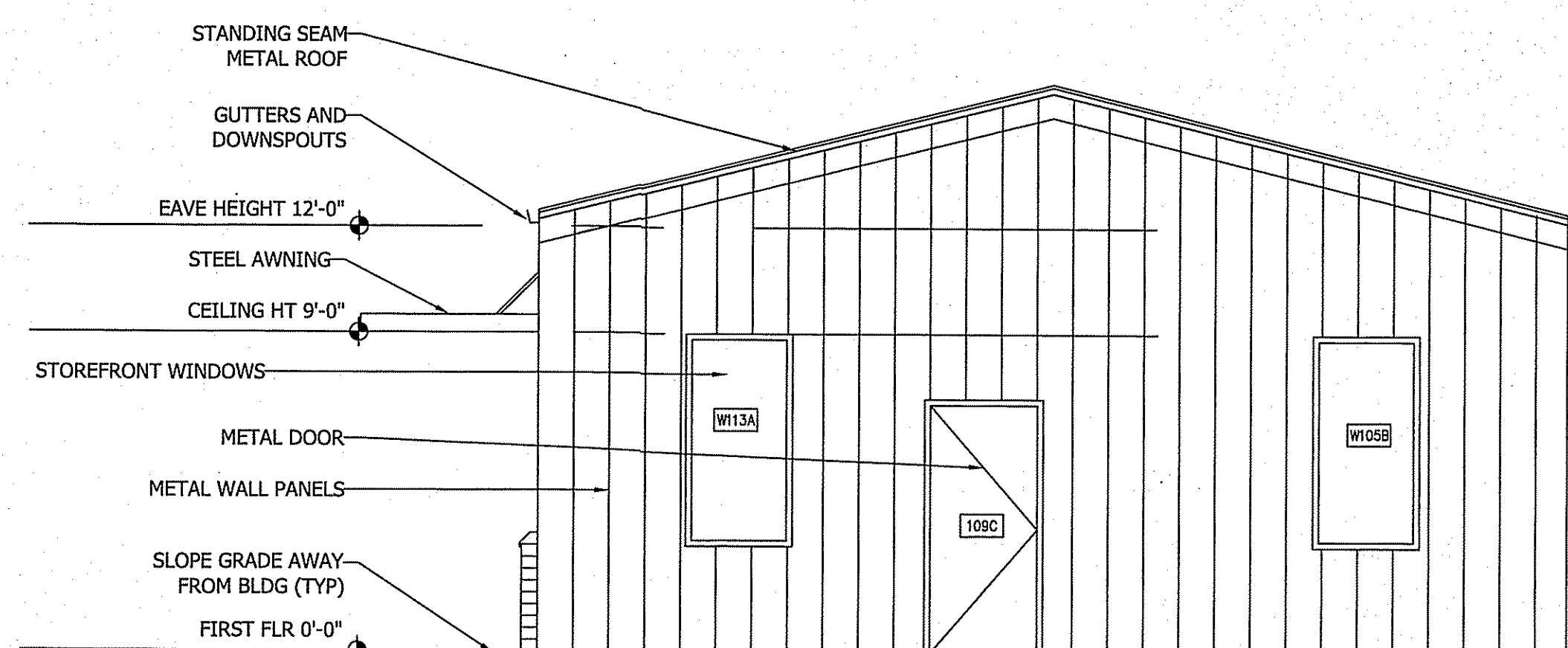
○ FRONT ELEVATION
Scale: 1/4" = 1'-0"



○ BACK ELEVATION
Scale: 1/4" = 1'-0"



○ SIDE ELEVATION
Scale: 1/4" = 1'-0"



○ SIDE ELEVATION
Scale: 1/4" = 1'-0"

Rev	Date	Description
0	01/25/19	ISSUED FOR CONSTRUCTION

Job No. 2605583	Designed FRT	Drawn FRT	Checked JAB	Reviewed FRT	Approved FRT	Reg. No. 15727	Date 1/31/2018
-----------------	--------------	-----------	-------------	--------------	--------------	----------------	----------------

Issue Certification

PARSONS
INCORPORATED
3577 PARKWAY LAKE SUITE 101
NORCROSS, GA 30092
PHONE: 770-446-4800
FAX: 770-446-4810

R
Rockdale Water Resources
858 Millard Ave NE, Conners, GA 30126
Phone: 770-276-1400

Owner: Rockdale Water Resources
Rockdale Water Resources
858 Millard Ave NE, Conners, GA 30126
Phone: 770-276-1400

SNAPPING SHOALS CREEK WPCP
ADMINISTRATION BUILDING ELEVATIONS

DRAWING NO.	REV
S-32	0