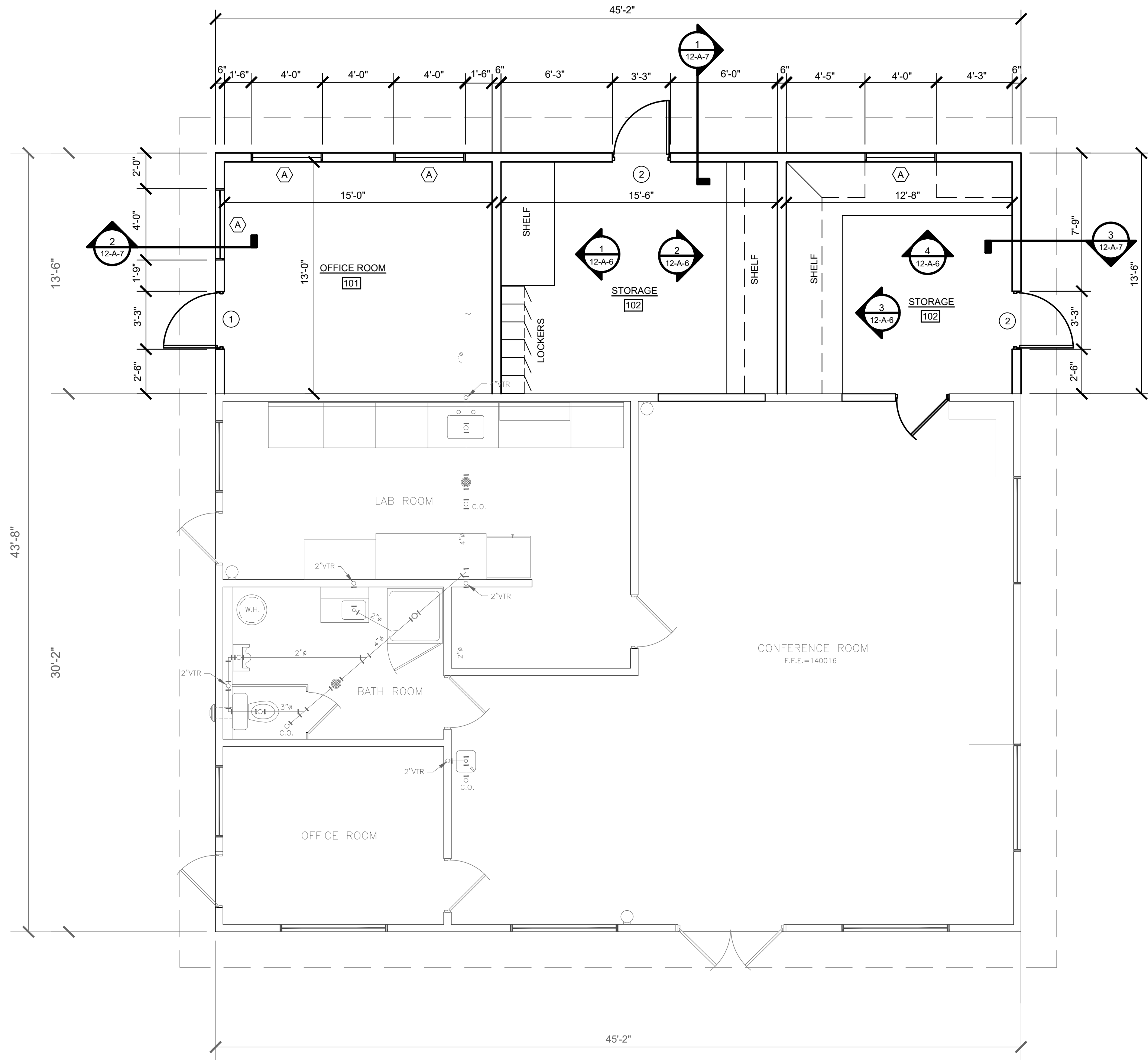


Z:\Projects\2019\2019-111 Cleveland - WWTTP Expansion\06 Drawings\Area 12 - Control Building\12-A-1 OF 7.dwg 08/01/2025 2:00pm aencarnacion



1  
12-A-2  
FLOOR PLAN  
1/4"=1'-0"

REPLACEMENT NOTES

REPLACE FLOORING. THE CONTRACTOR COORDINATE WITH THE OWNER THE NEW FLOORING, COLOR AND DESIGN.



No.	Revisions	Initial	Date
1	RELEASED FOR BID	MM	7-31-2025

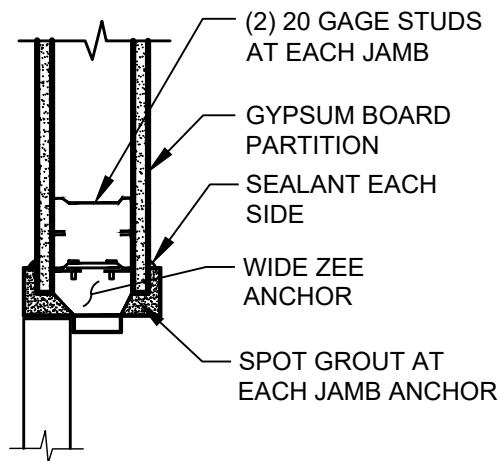


CITY OF CLEVELAND  
WASTEWATER TREATMENT PLANT UPGRADES  
CONTROL BUILDING FLOOR PLAN

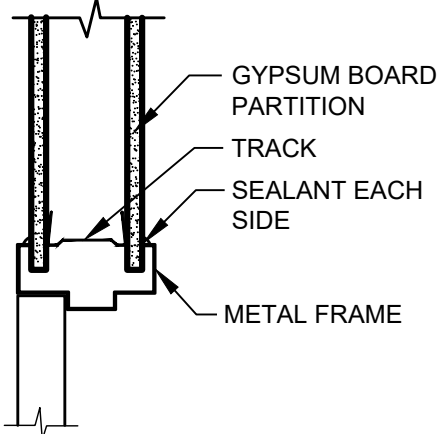
Drawn: AE	Design: AE	Checked: MM	Project No: R2019-111	Date: JULY 2022

ROOM FINISH SCHEDULE																			
ROOM NUMBER	ROOM	FLOOR				WALL				BASE				WAINSCOT				CEILING	
		1	2	3	4	5	6	7	8	9	10	11	12	13	14	15	16	17	18
101	VESTIBULE	1				5	6	7	8	9	10	11	12	13	14	15	16	17	8'-1"
102	CONFERENCE/BREAKROOM	1				5	6		9								17	9'-10"	
103	JAN./MECH./ELECT.	1	2			5	6		9		10						18		
104	CORRIDOR	1				5			9								17	9'-10"	
105	TOILET-MEN	1	3			5			9	11	13						17	8'-1"	
106	TOILET-WOMEN	1	3			5			9	11	13						17	8'-1"	
107	LOCKERS	1				5			9								17	8'-10"	
108	CONTROL ROOM	1				5			9								17	9'-10"	
109	LABORATORY	1				5			9								17	9'-10"	
110	LABORATORY	1				5			9								17	9'-10"	

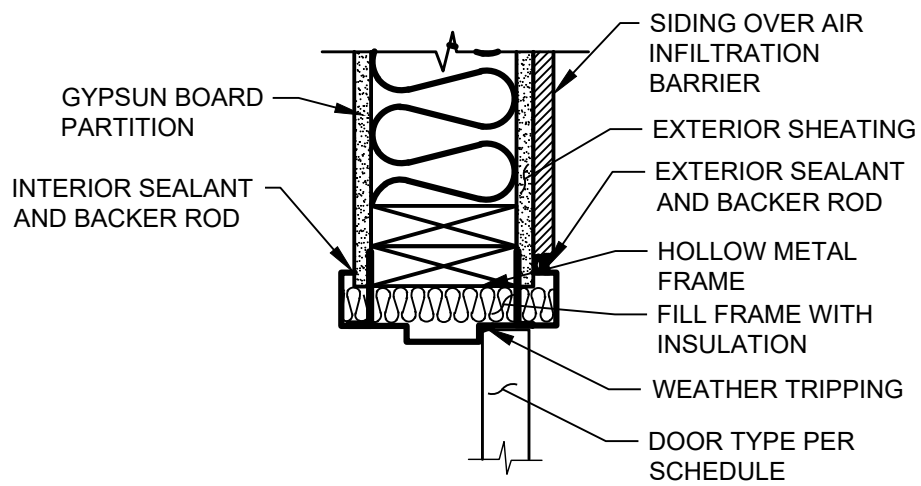
ELEVATION		
MARK	6, 7, 11, 12	8, 9, 10
SIZE	3'-0" X 7'-0" X 1-3/4"	3'-0" X 7'-0" X 1-3/4"
TYPE	S.C. WD. BIRCH VEN.	S.C. WD. BIRCH VEN.
FRAME	2" X 5-3/4" HOL. MET.	2" X 5-3/4" HOL. MET.
HEAD	4/A-2	4/A-2
JAMB	5/A-2	5/A-2
SILL		
HDW SET		



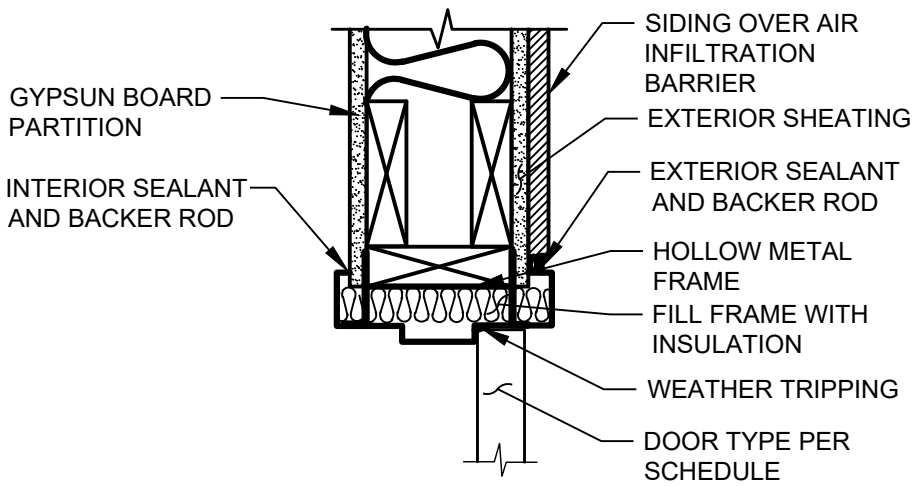
1  
12-A-3  
1 1/2"=1'-0"



2  
12-A-3  
1 1/2"=1'-0"



3  
12-A-3  
1 1/2"=1'-0"



4  
12-A-3  
1 1/2"=1'-0"

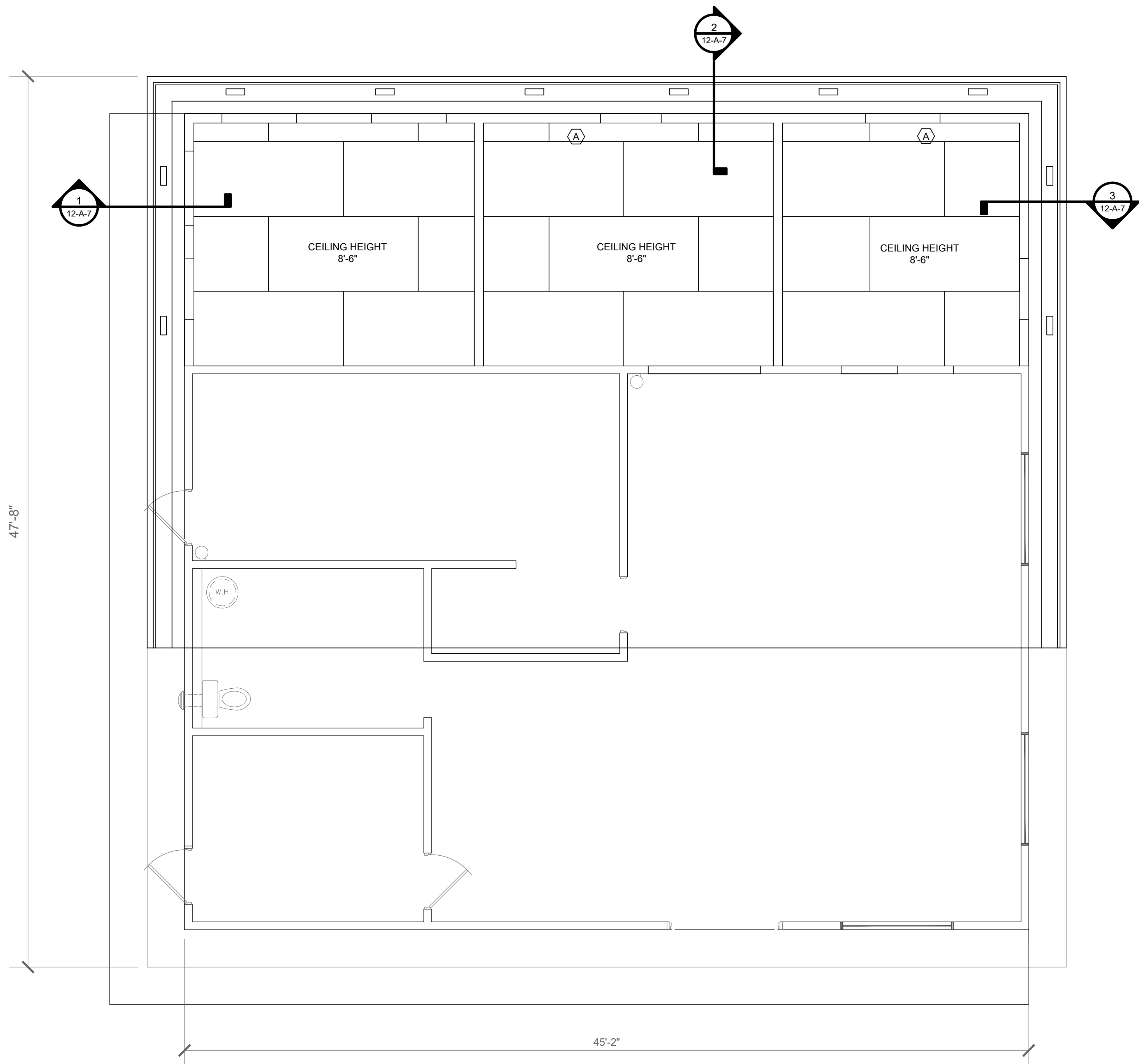


No.	Revisions	Initial	Date
1	RELEASED FOR BID	MM	7-31-2025



CITY OF CLEVELAND  
WASTEWATER TREATMENT PLANT UPGRADES  
CONTROL BUILDING  
OPENING SCHEDULE AND DETAILS

Drawn: AE	Project No: R2019-111
Design: AE	Scale: AS SHOWN
Checked: MM	Date: JULY 2022



1 REFLECTED CEILING PLAN  
12-A-4 1/4"=1'-0"



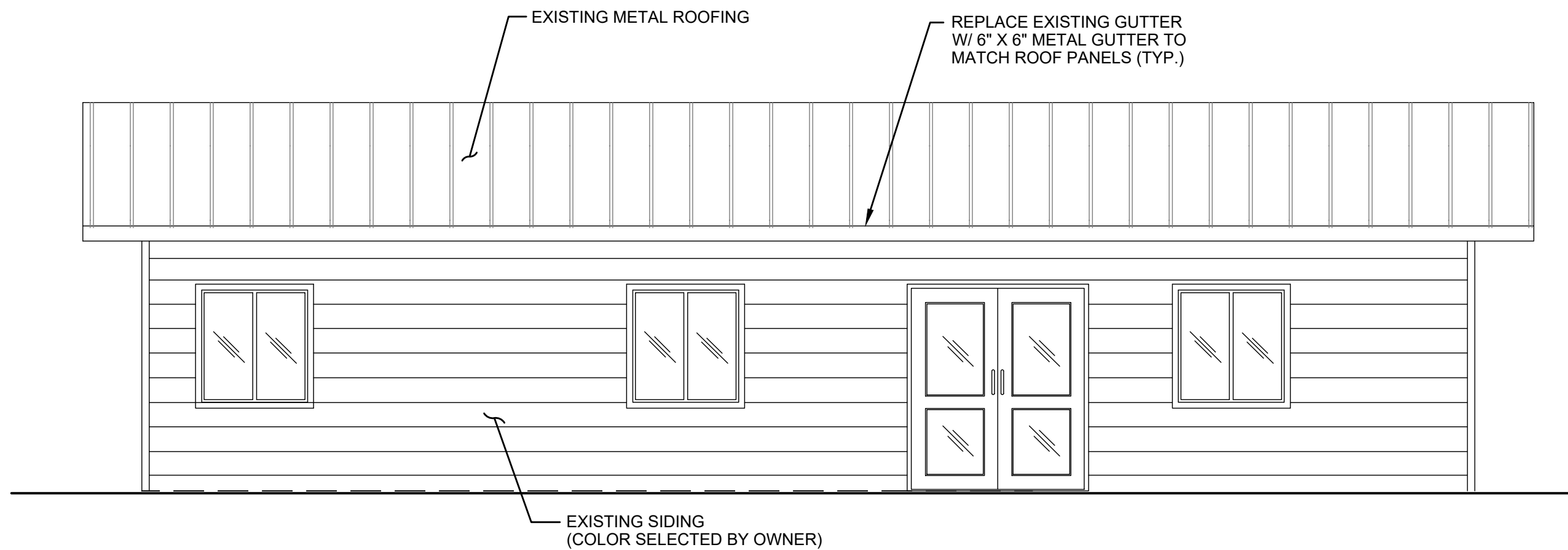
No.	Revisions	Initial	Date
1	RELEASED FOR BID	MM	7-31-2025



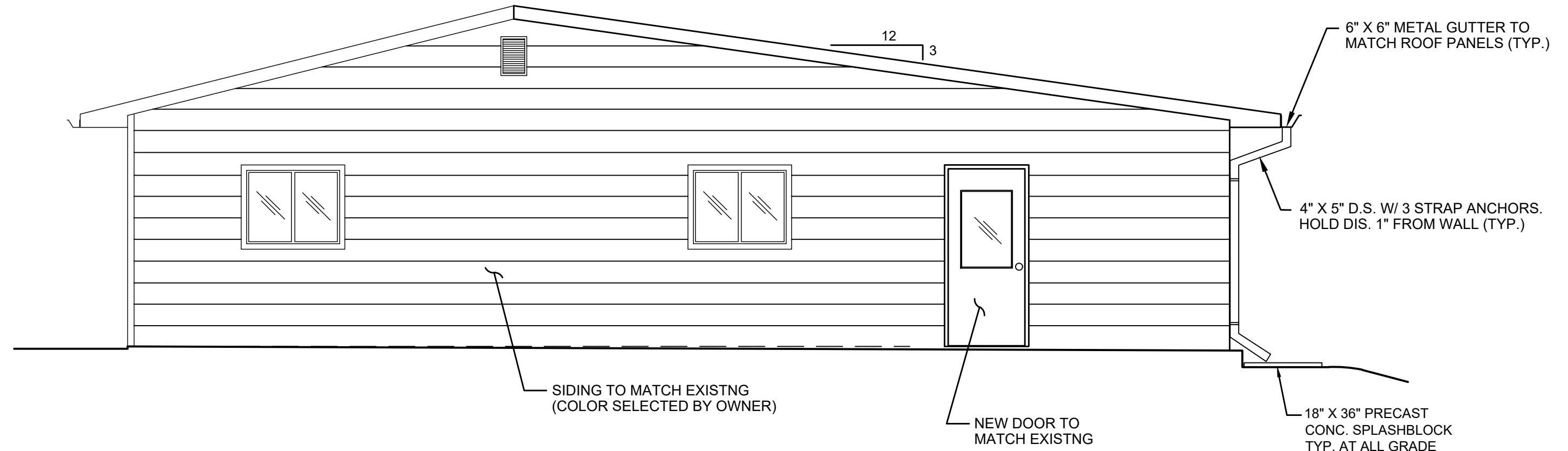
CITY OF CLEVELAND  
WASTEWATER TREATMENT PLANT UPGRADES  
CONTROL BUILDING  
REFLECTED CEILING PLAN

Drawn: AE	Project No: R2019-111
Design: AE	Scale: AS SHOWN
Checked: MM	Date: JULY 2022
	12-A-1 OF 7.dwg

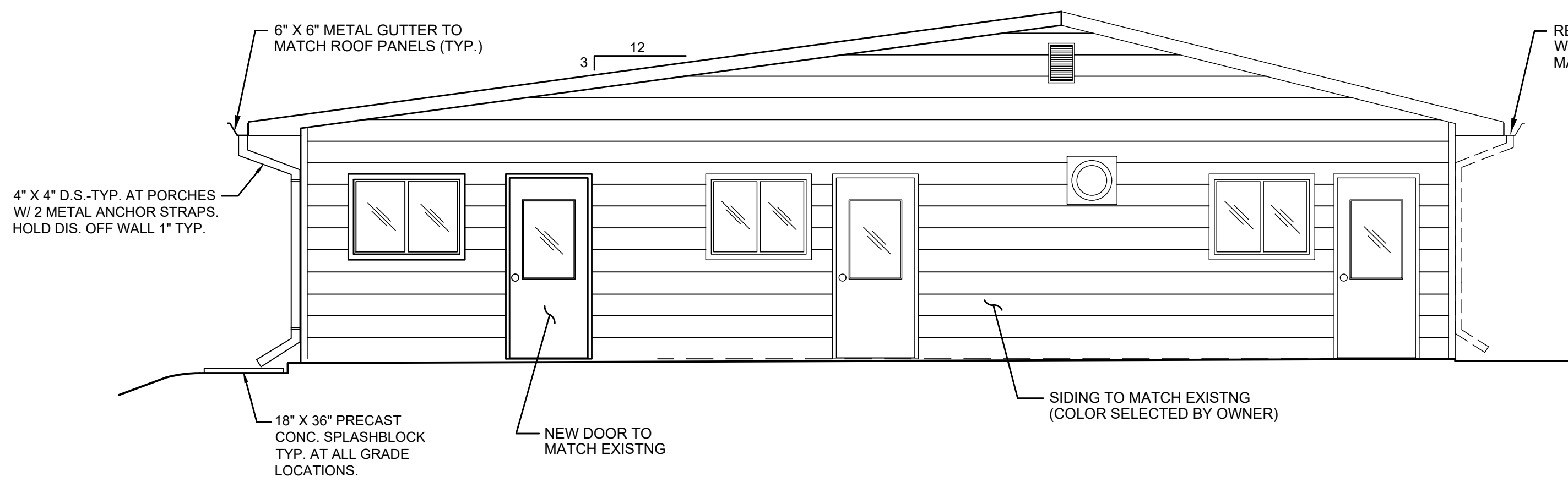
Z:\Projects\2019\2019-111 Cleveland - WWTTP Expansion\06 Drawings\Area 12 - Control Building\12-A-1 OF 7.dwg 08/01/2025 2:00pm aencarnacion



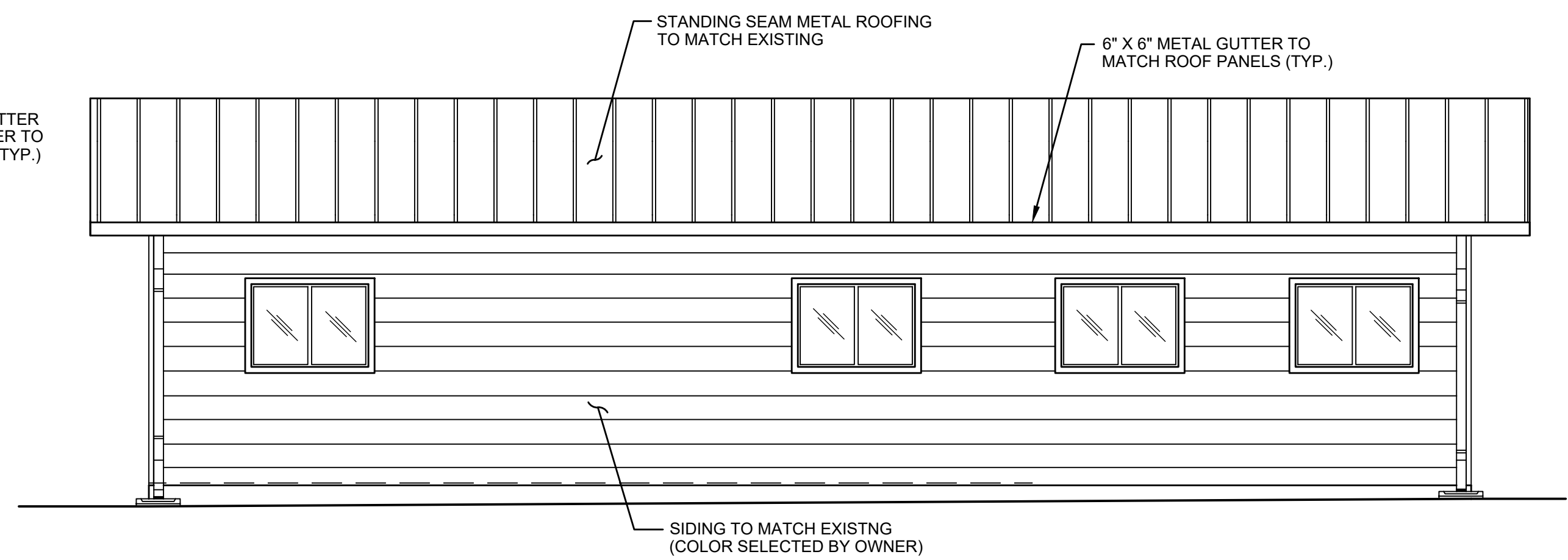
1 FRONT ELEVATION  
12-A-5 1/4"=1'-0"



3 LEFT SIDE ELEVATION  
12-A-5 1/4"=1'-0"



2 RIGHT SIDE ELEVATION  
12-A-5 1/4"=1'-0"



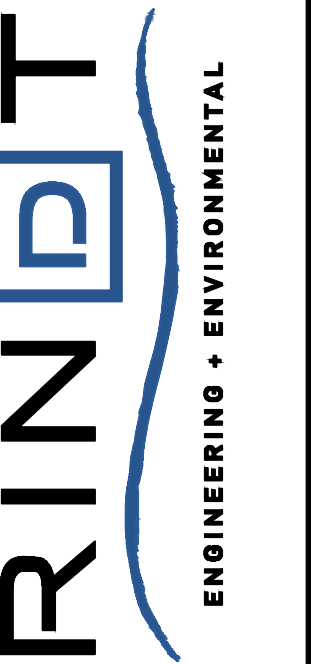
4 REAR ELEVATION  
12-A-5 1/4"=1'-0"

REPLACEMENT NOTES

REPLACE ALL WINDOWS, SLIDING GLASS DOOR IN THE EXISTING BUILDING.



No.	Revisions	Initial	Date
1	RELEASED FOR BID	MM	7-31-2025

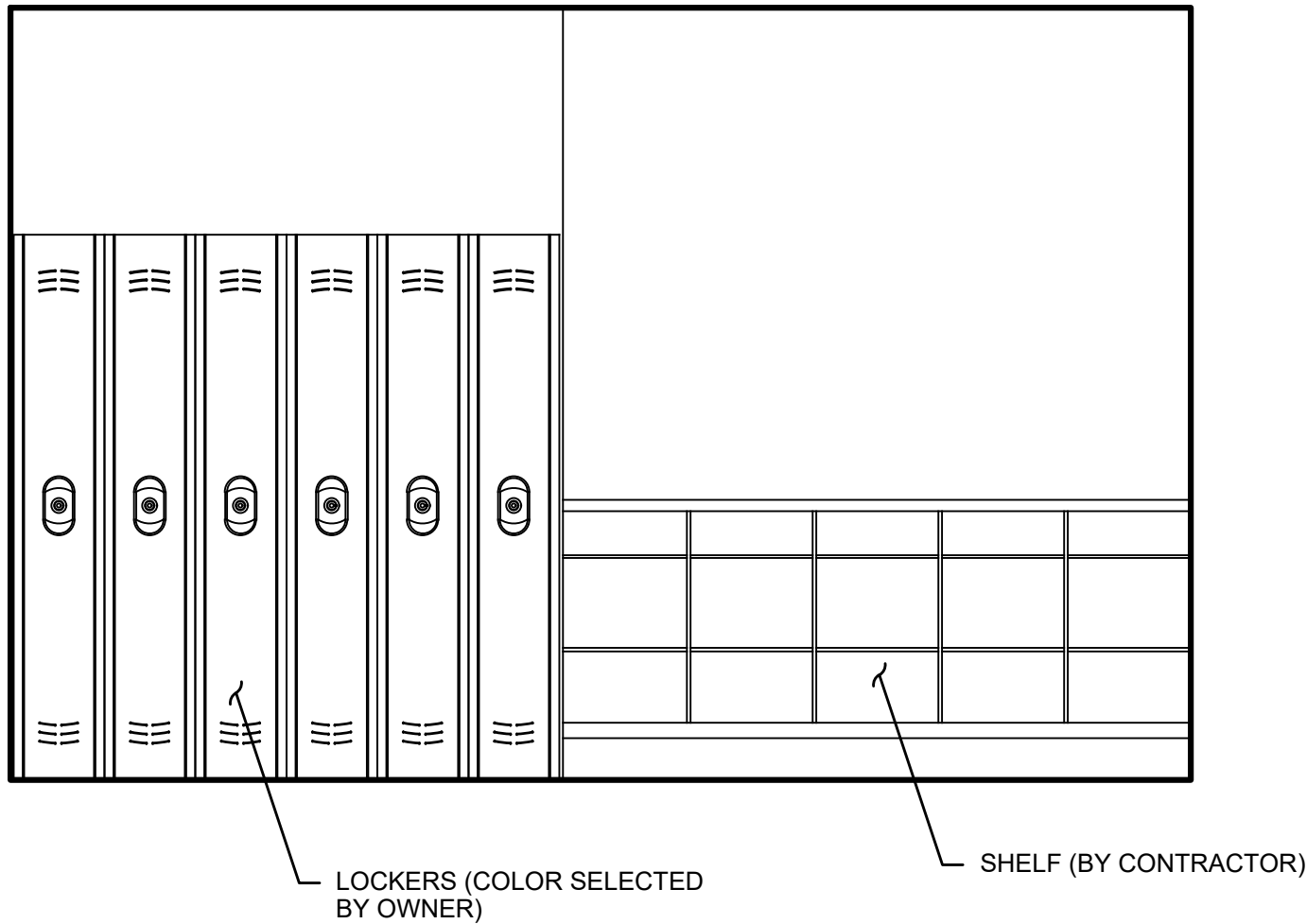


CITY OF CLEVELAND  
WASTEWATER TREATMENT PLANT UPGRADES  
CONTROL BUILDING  
EXTERIOR ELEVATIONS

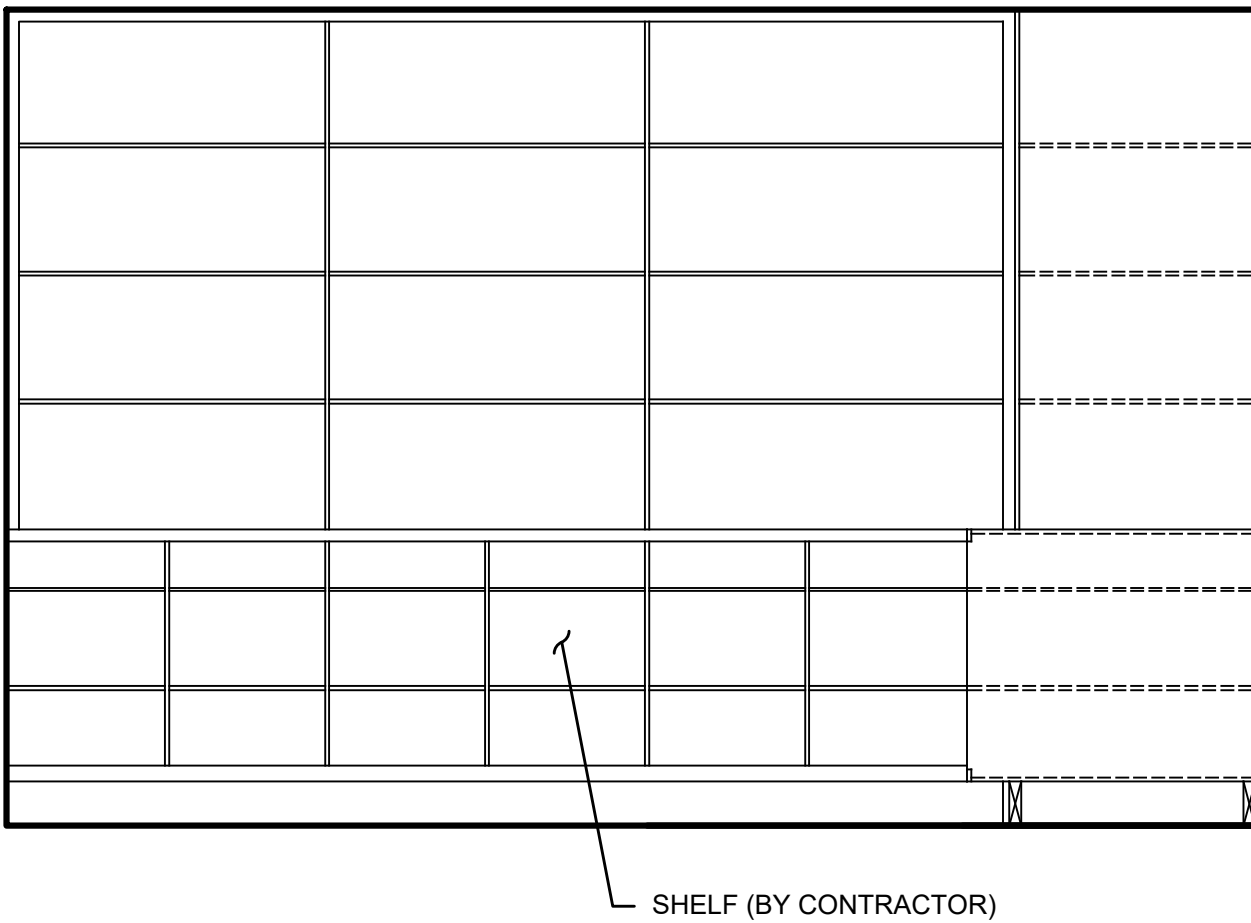
Drawn: AE	Design: AE	Checked: MM	Project No: R2019-111	Date: JULY 2022
Scale: AS SHOWN				12-A-1 OF 7.dwg

Sheet No.  
12-A-5

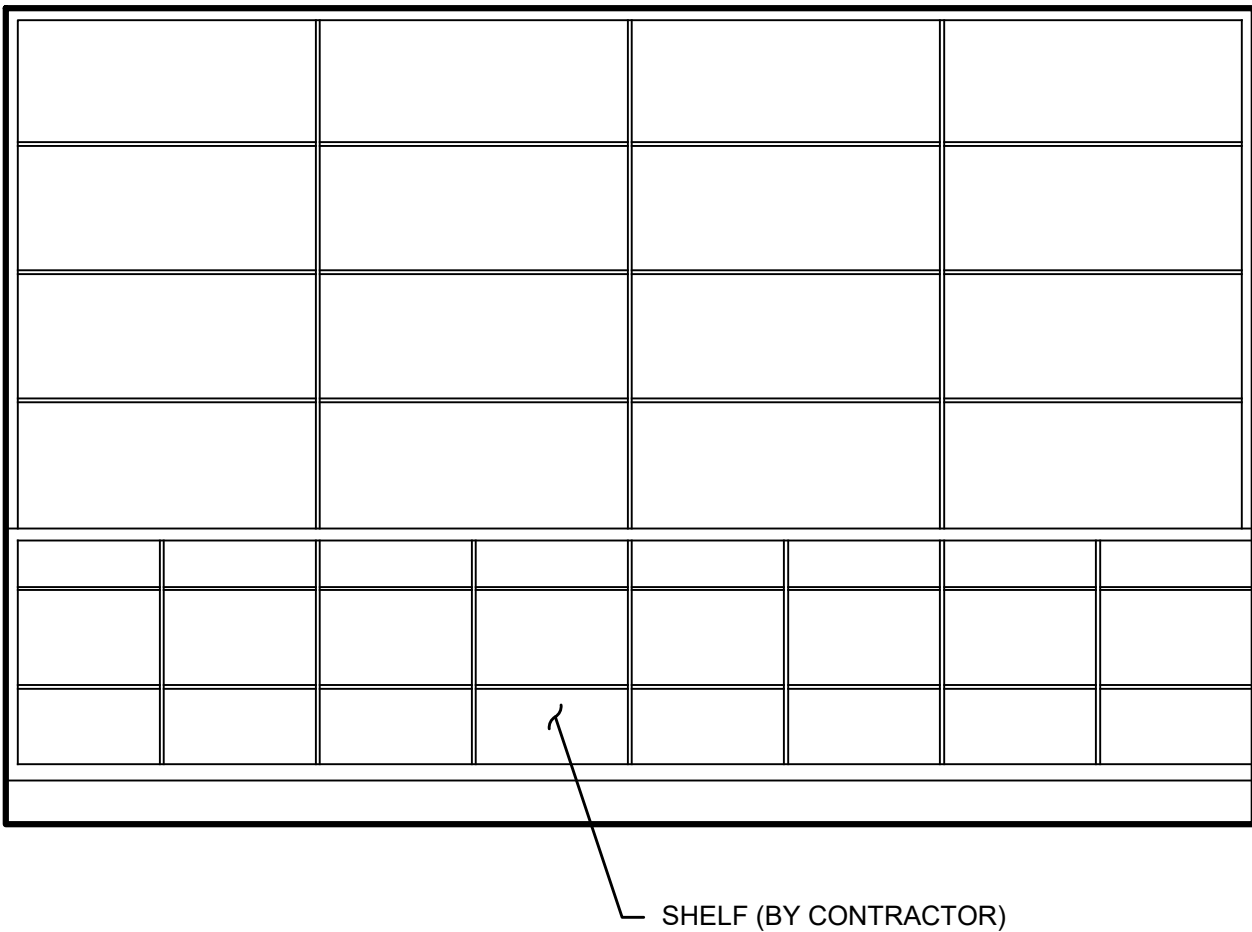
Z:\Projects\2019\2019-111 Cleveland - WWTP Expansion\06 Drawings\Area 12 - Control Building\12-A-1 OF 7.dwg 08/01/2025 2:01pm aencarnacion



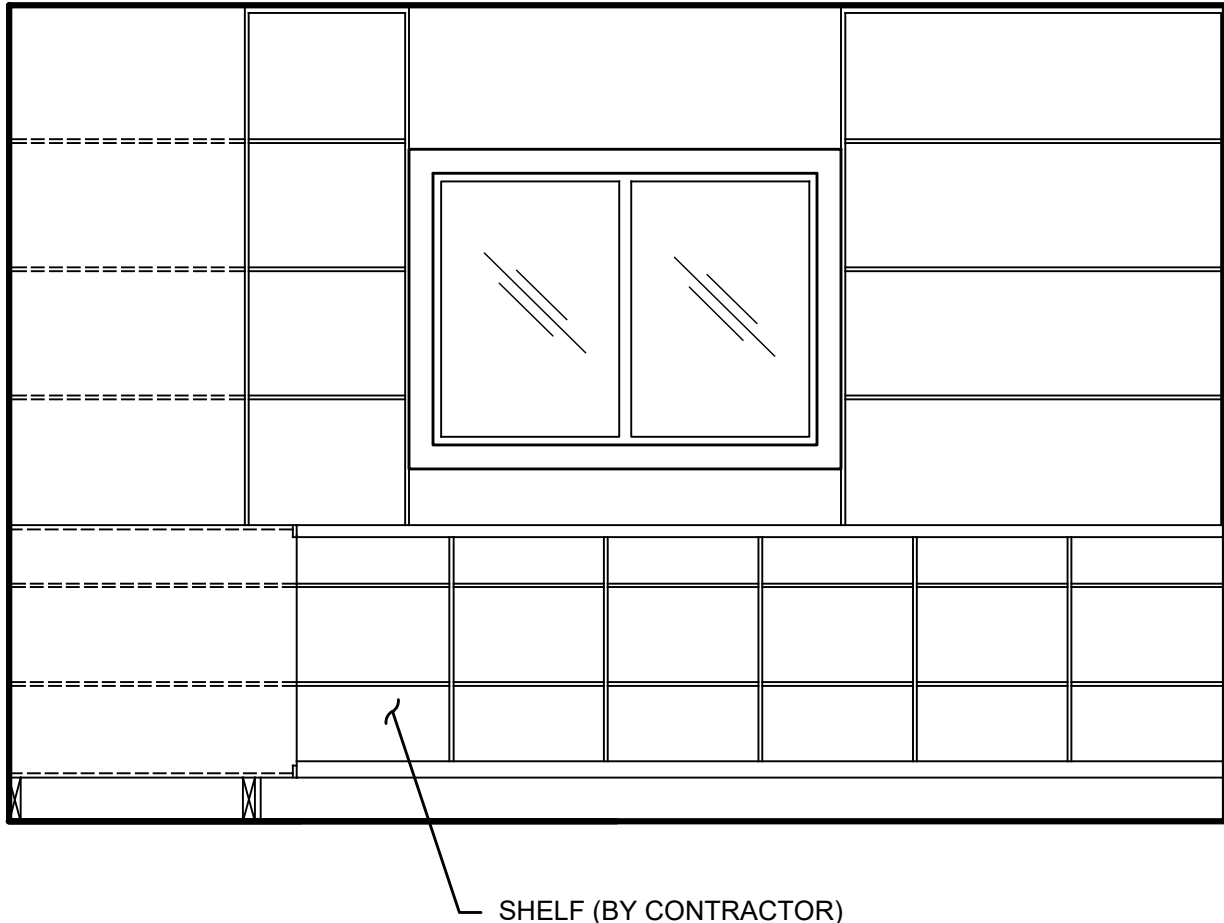
1  
12-A-6 ELEVATION - STORAGE - 102  
1/2" = 1'-0"



3  
12-A-6 ELEVATION - STORAGE - 103  
1/2" = 1'-0"



2  
12-A-6 ELEVATION - STORAGE - 102  
3/4" = 1'-0"



4  
12-A-6 ELEVATION - STORAGE - 103  
3/4" = 1'-0"



No.	Revisions	Initial	Date
1	RELEASED FOR BID	MM	7-31-2025



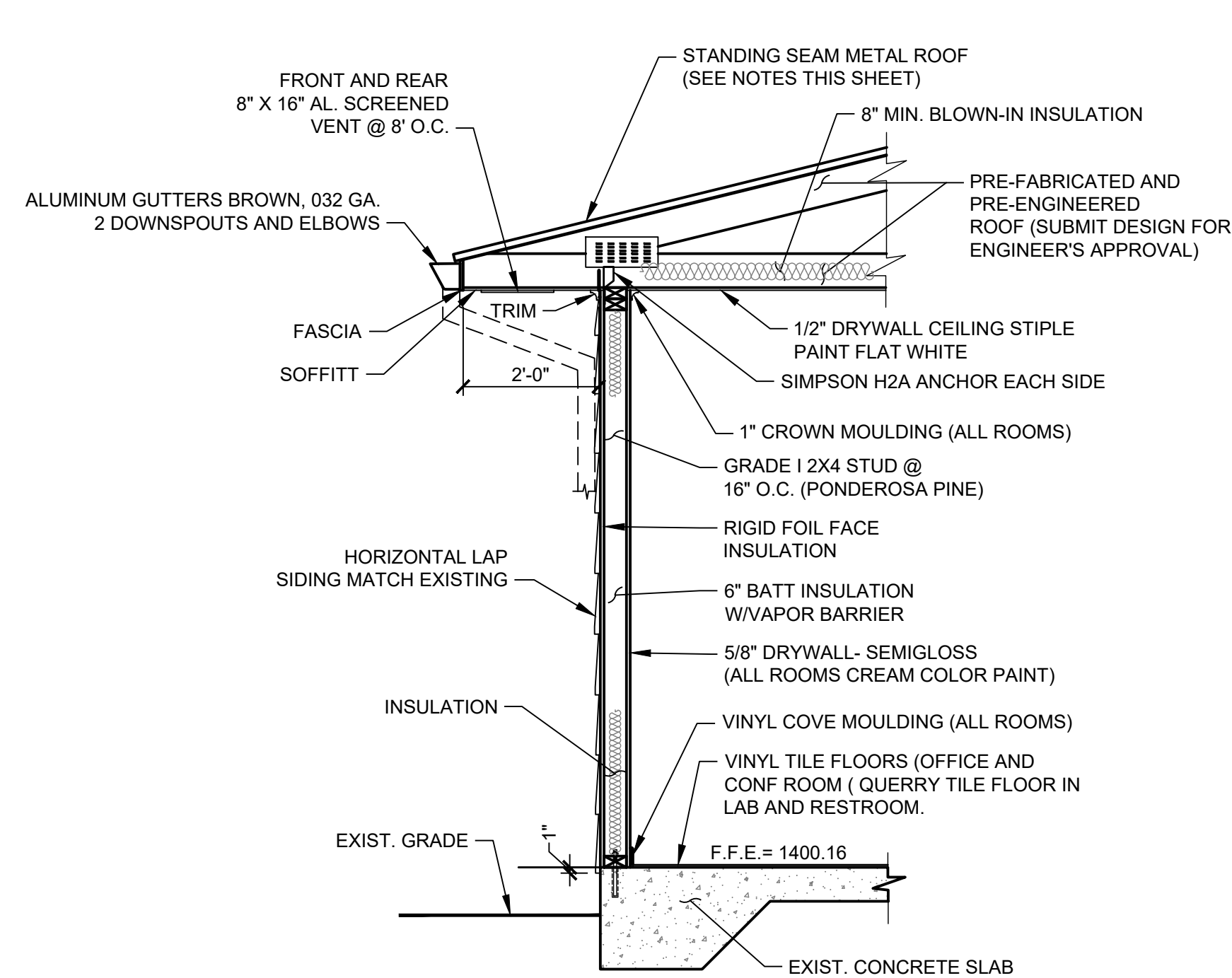
CITY OF CLEVELAND  
WASTEWATER TREATMENT PLANT UPGRADES

CONTROL BUILDING  
INTERIOR ELEVATIONS AND DETAILS

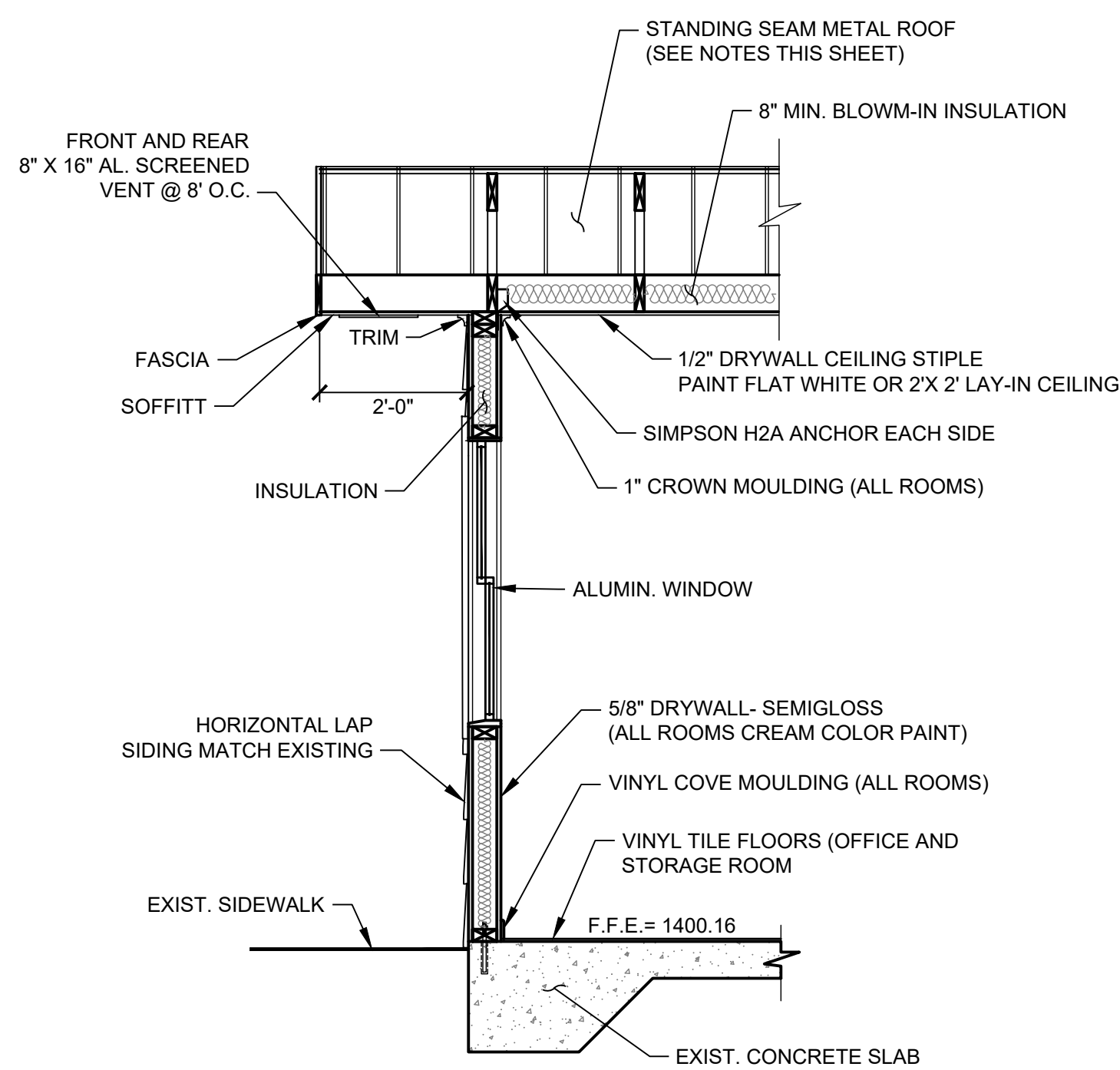
Drawn: AE	Project No: R2019-111
Design: AE	Scale: AS SHOWN
Checked: MM	Date: JULY 2022
	12-A-1 OF 7.dwg

Sheet No.

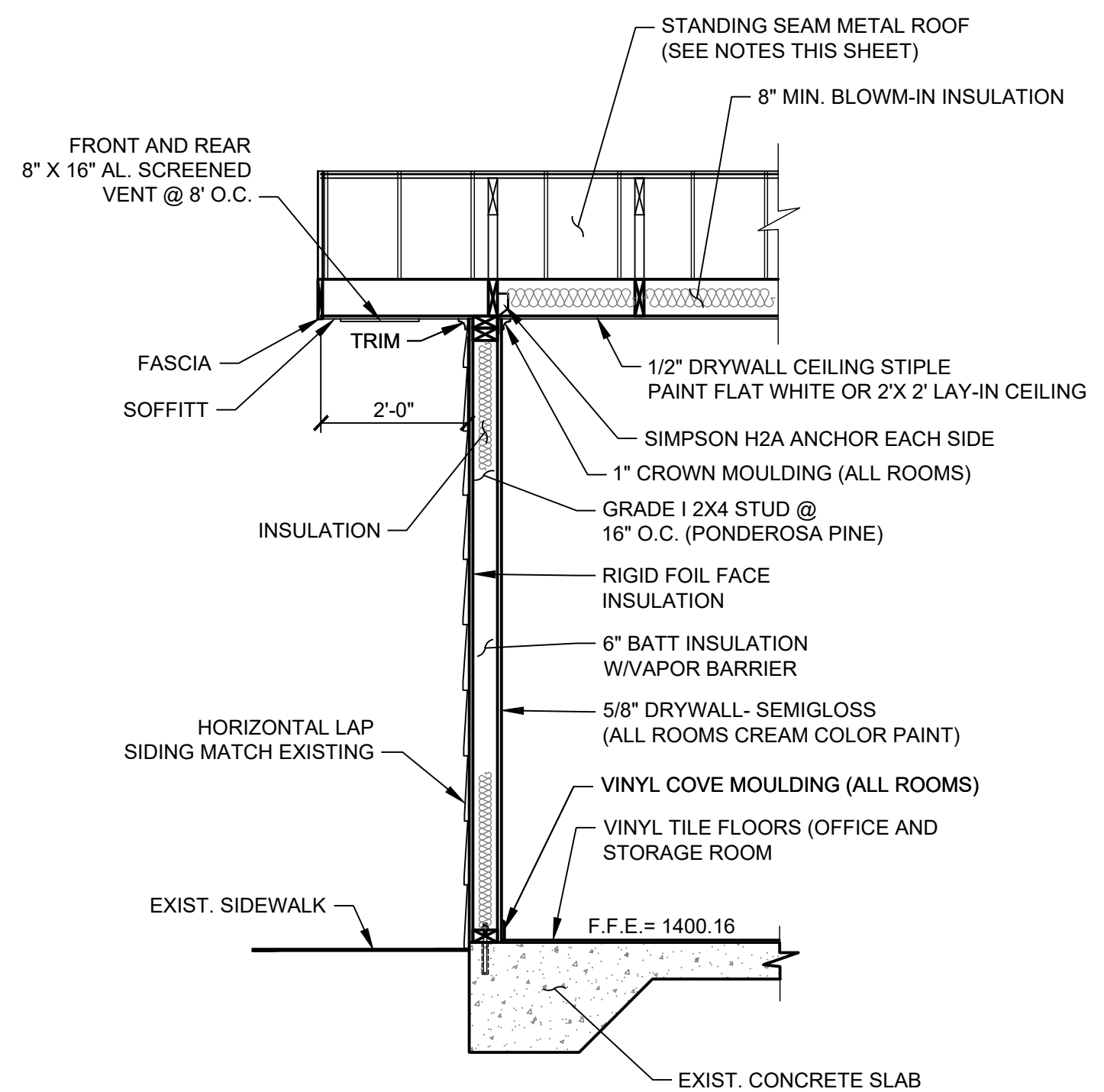
12-A-6



1 TYPICAL WALL SECTION  
12-A-7 3/4"=1'-0"



2 TYPICAL WALL SECTION  
12-A-7 3/4"=1'-0"



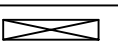
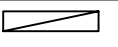
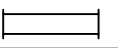
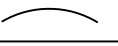
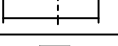
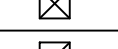

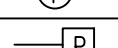
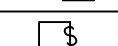
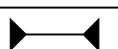
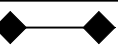
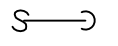
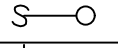
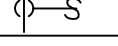
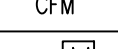
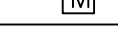
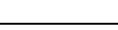
3 TYPICAL WALL SECTION  
12-A-7 3/4"=1'-0"

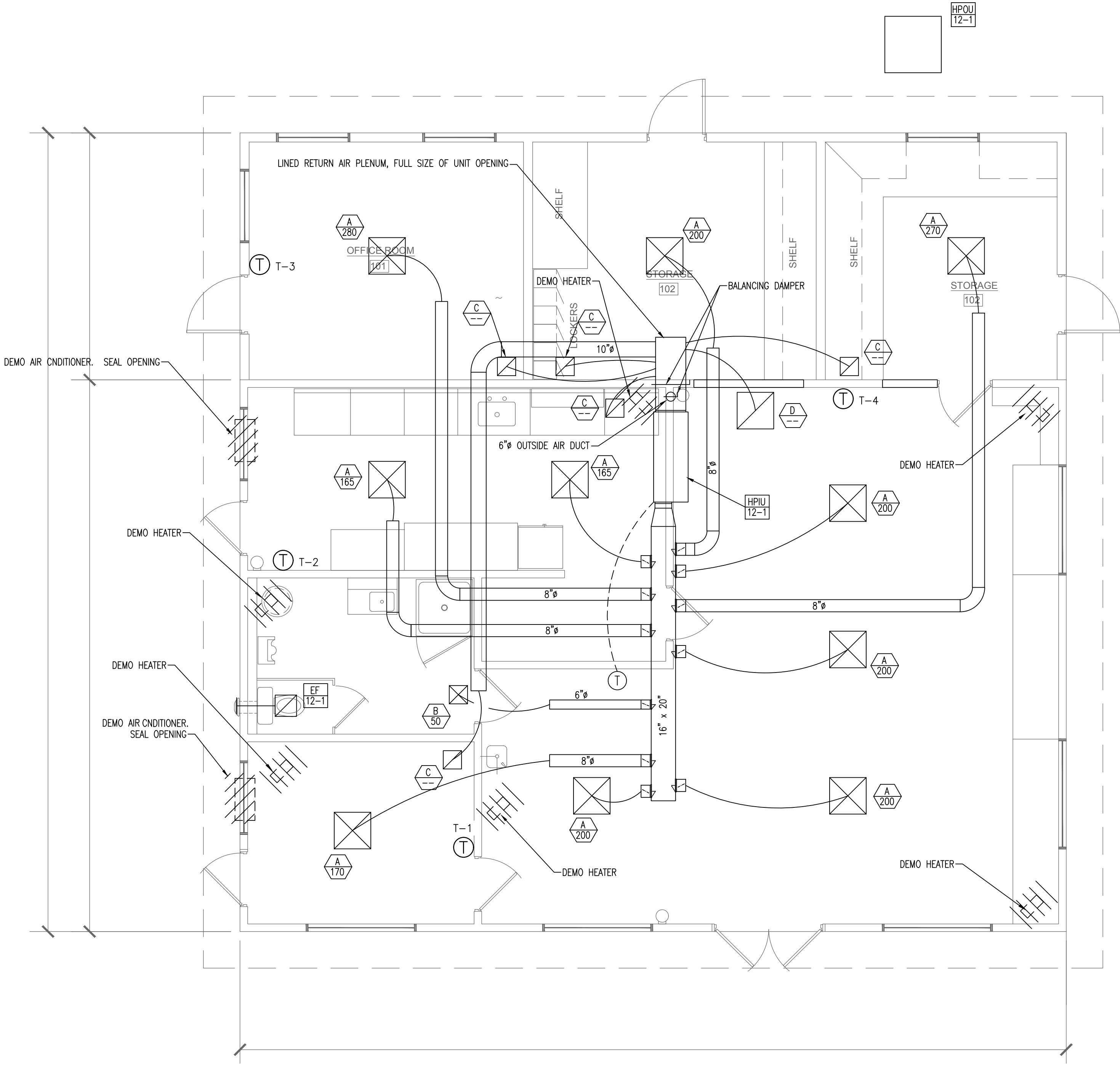
NOTES:

1. UN-FINISHED SPLIT FACE CONCRETE BLOCK, COLOR SELECTED BY OWNER.
2. STANDING SEAM METAL ROOF TO BE STRIATED OR V-RIBBED 24 GAUGE STEEL MATCH TO EXISTING, COLOR SELECTED BY OWNER. INSTALLED AS RECOMMENDED BY MANUFACTURER. NO FASTENERS SHALL BE EXPOSED.
3. VINYL VENT WITH INSET SCREEN, COLOR SELECTED BY OWNER .

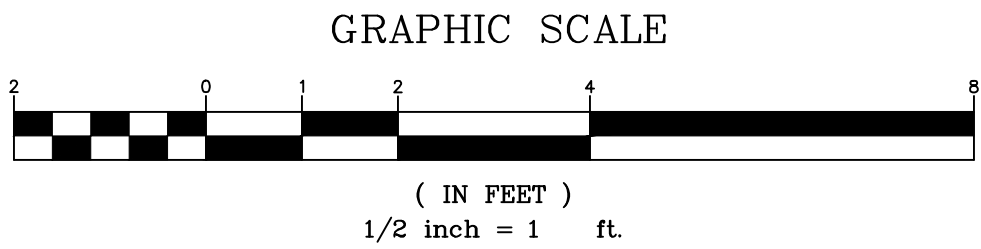
No.	Revisions	Initial	Date
1	RELEASED FOR BID	MM	7-31-2025

Drawn: AE
Design: AE
Checked: MM
Project No: R2019-111
Scale: AS SHOWN
Date: JULY 2022
12-A-1 OF 7.dwg

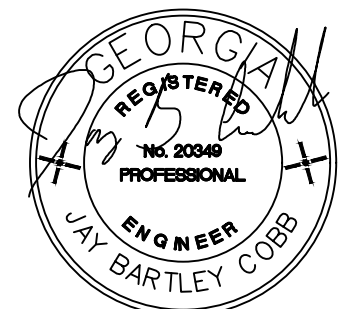
HVAC SYMBOLS AND ABBREVIATIONS			
	SUPPLY AIR DUCT UP/DOWN	CHWR	CHILLED WATER RETURN
	RETURN/EXHAUST AIR DUCT UP/DOWN	CHWS	CHILLED WATER SUPPLY
	NEW DUCTWORK	CU-*	CONDENSING UNIT
	FLEXIBLE DUCT	DIA.	DIAMETER
	VOLUME DAMPER	EF-*	EXHAUST FAN
	SUPPLY DIFFUSER	ES	EQUAL SPLIT
	RETURN OR EXHAUST GRILLE	FIL-*	FILTER
	THERMOSTAT	F-*	FURNACE
	PRESSURE SENSOR	GA	GAUGE
	SMOKE DETECTOR	OA	OUTSIDE AIR
	FIRE DAMPER	OE	OPEN ENDED DUCT
	FIRE/SMOKE DAMPER	SD	SPLITTER DAMPER
	PIPE TURNED DOWN	U/G	UNDERGROUND
	PIPE TURNED UP	UH-*	UNIT HEATER
	BRANCH PIPE OFF MAIN	VD	VOLUME DAMPER
	CUBIC FEET PER MINUTE	A/C-*	AIR CONDITIONING SYSTEM
	MOTOR OPERATOR	AFF	ABOVE FINISHED FLOOR
		AHU-*	AIR HANDLING UNIT



1 CONTROL BUILDING ADDITION HVAC PLAN  
SCALE: 1/2" = 1'



- NOTES:
1. PROVIDE FOUR (4) THERMOSTATS AND HAVE THEM AUTOMATICALLY ADJUST AIR TEMPERATURE IN THE ASSOCIATED ROOM. COORDINATE THE EXACT QUANTITY AND LOCATION IF THERMOSTATS WITH THE OWNER.  
T1 - EXISTING OFFICE;  
T2 - EXISTING LAB;  
T3 - NEW OFFICE;  
T4 - EXISTING CONFERENCE ROOM AND NEW STORAGE ROOMS.



No.	Revisions	Initial	Date
1	RELEASED FOR BID	JBC	7-31-2025



CITY OF CLEVELAND  
WASTEWATER TREATMENT PLANT UPGRADES  
CONTROL BUILDING ADDITION HVAC PLAN

Drawn: JBC	Design: JBC	Check: JBC	Project No: R2019-111	Scale: AS SHOWN	Date: JULY 2025
------------	-------------	------------	-----------------------	-----------------	-----------------

Sheet No.

H-10



**J. B. Cobb Engineering, LLC**  
Mechanical/Industrial  
Office: (678) 363-8754 97 Lakewood Drive  
Since 1997 Duluth, GA 30132  
Cell Phone: (404) 403-2126 jbcobb@bellsouth.net



**EDEC**  
A SALAS O'BRIEN COMPANY

**EDEC, INC.**  
4120 CHATTAHOOCHEE TRACE  
SUITE A  
DULUTH, GEORGIA 30097  
TEL: (770) 493-8685