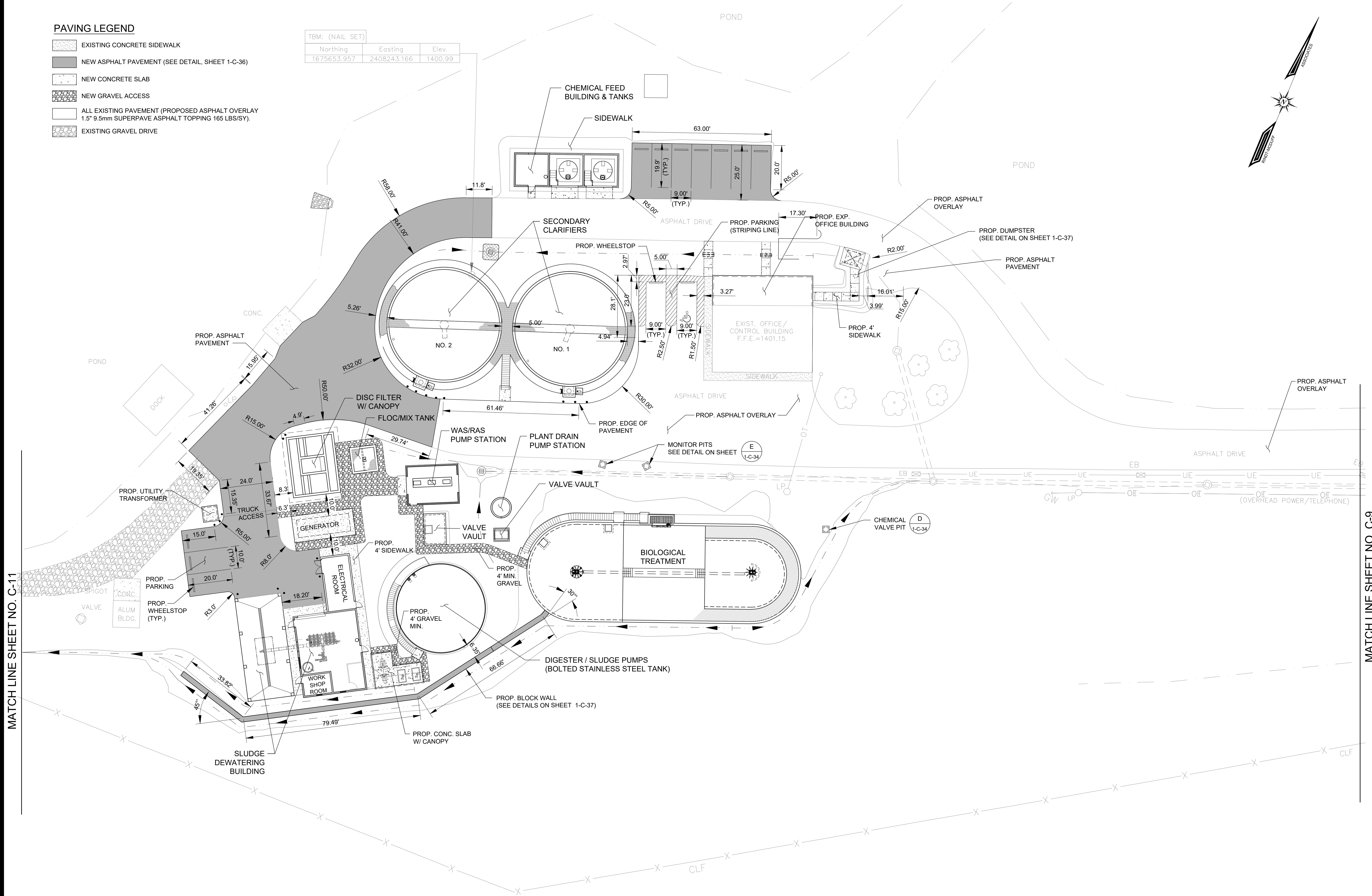


# PAVING LEGEND

- EXISTING CONCRETE SIDEWALK
- NEW ASPHALT PAVEMENT (SEE DETAIL, SHEET 1-C-36)
- NEW CONCRETE SLAB
- NEW GRAVEL ACCESS
- ALL EXISTING PAVEMENT (PROPOSED ASPHALT OVERLAY  
1.5" 9.5mm SUPERPAVE ASPHALT TOPPING 165 LBS/SY)
- EXISTING GRAVEL DRIVE

TBM: (NAIL SET)		
North	East	Elev.
1675653.957	2408243.166	1400.99



MATCH LINE SHEET NO. C-11

MATCH LINE SHEET NO. C-9

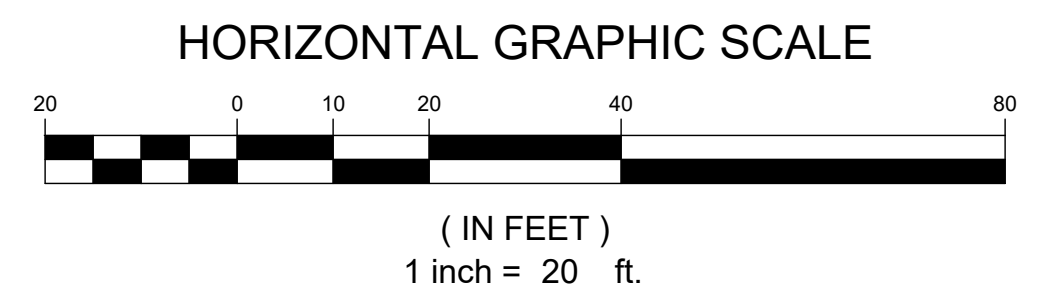
## UTILITY DISCLAIMER

UTILITIES MAY EXIST WHICH ARE NOT SHOWN ON THE PLANS AND THE EXISTING UTILITY LINES THAT ARE SHOWN ARE APPROXIMATE LOCATIONS ONLY. CONTRACTOR SHALL FIELD VERIFY ALL EXISTING UTILITY LINE LOCATIONS PRIOR TO ANY CONSTRUCTION. THE CONTRACTOR SHALL ALSO BE RESPONSIBLE FOR COORDINATING WITH ALL UTILITY COMPANIES HAVING UTILITIES WITHIN OR ADJACENT TO THE WORK AREA. THE CONTRACTOR SHALL COORDINATE CLOSELY WITH THESE UTILITY COMPANIES AS NECESSARY REGARDING MODIFICATIONS TO EXISTING SYSTEMS OR ADAPTATIONS FOR NEW SERVICE CONNECTIONS. ANY DEVIATIONS FROM THE NEW UTILITY DESIGN LOCATIONS SHOWN IN THESE PLANS SHALL BE REPORTED TO THE PROJECT ENGINEER PRIOR TO CONSTRUCTION. ANY AND ALL DAMAGE TO EXISTING UTILITY LINES RESULTING FROM CONTRACTOR NEGLIGENCE SHALL BE REPAIRED SOLELY AT CONTRACTOR EXPENSE.



Know what's below.  
Call before you dig.  
1-800-282-7411

24 HOUR CONTACT: ANDREA SMITH 706-200-6438



No.	Revisions	Initial	Date
1	RELEASED FOR BID	MM	7-31-2025



CITY OF CLEVELAND  
WASTEWATER TREATMENT PLANT UPGRADES

SITE LAYOUT PLAN

Drawn: AE	Design: AE	Checked: MM	Project No: R2019-111	Scale: 1" = 20'	Date: JULY 2022
-----------	------------	-------------	-----------------------	-----------------	-----------------

Sheet No. 1-C-10