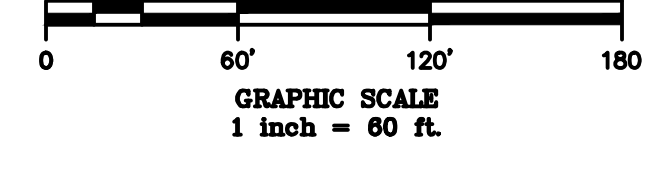
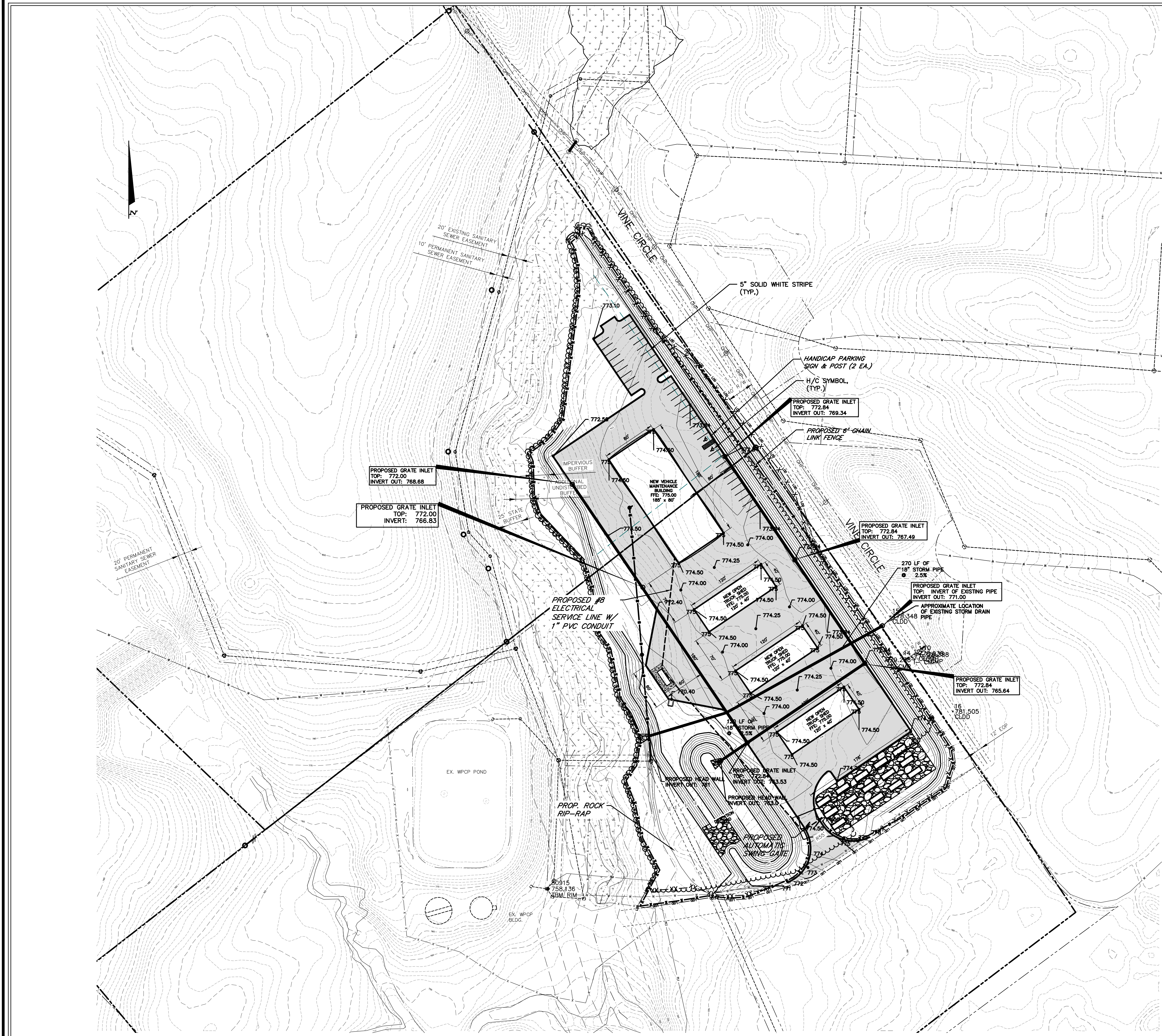


PROJECT NUMBER	2512
DATE	12/09/25
DRAWN BY	NES
APPROVED BY	

REVISIONS	

- GENERAL NOTES:**
- SEE SHEET 2 FOR PROJECT NOTES.
 - SEE SHEET 3 FOR BENCH MARK ELEVATIONS.
 - ALL STRIPING SHALL BE THERMOPLASTIC UNLESS NOTED OTHERWISE.
 - ALL SIGNS SHALL CONFORM TO MUTCD STANDARDS & SPECIFICATIONS & STRIPING SHALL CONFORM TO GDOT STANDARDS.

	EXISTING	PROPOSED
STRUCTURE		
ROADWAY		
GRAVEL		
FENCE		
PROPERTY LINE		
MINIMUM BUILDING LINE		
BUFFER		
CONTOUR		
STORM SEWER LINE		
SEWER LINE & SERV.		
FORCE MAIN		
FIRE PROTECTION		
WOODS LINE		
DRAINAGE DITCH		
CONSTRUCTION LIMITS		
FLOW DIRECTION		



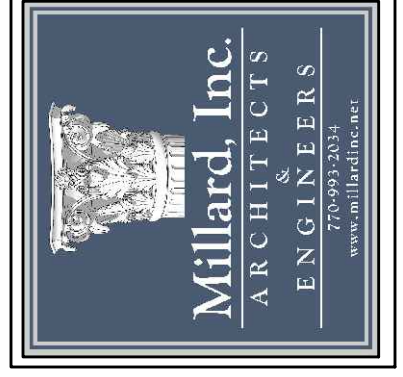
GEORGIA811
www.Georgia811.com

Know what's below.
Call before you dig.

CITY OF SOCIAL CIRCLE
PUBLIC WORKS DEPARTMENT
SITE GRADING, DRAINAGE PLAN,
& STRIPING LAYOUT
NEW VINE CIRCLE, SOCIAL CIRCLE, GEORGIA 30025



Millard, Inc.
Architects & Engineers
580 Colonial Park Drive
Roswell, Georgia 30075
770-993-2034



This drawing is the property of Millard, Inc. Architects and is not to be physically and / or electronically copied or reproduced in whole or in part. It is only to be used for the project specifically identified herein.

SHEET NUMBER

E-5

G:\Social Circle\242774_Social Circle Public Works Facility\04-2 - Construction Drawings\4 - Drawings\4 - Construction Drawings\242774_Base DWF\addendum_1.dwg